

## Summary

<b>Production Name</b>	KIT Mouse Monoclonal Antibody
<b>Description</b>	Mouse Monoclonal Antibody
<b>Host</b>	Mouse
<b>Application</b>	WB,IHC,ELISA
<b>Reactivity</b>	Human

## Performance

<b>Conjugation</b>	Unconjugated
<b>Modification</b>	Unmodified
<b>Isotype</b>	Mouse IgG1
<b>Clonality</b>	Monoclonal
<b>Form</b>	Liquid
<b>Storage</b>	Store at 4°C short term. Aliquot and store at -20°C long term. Avoid freeze/thaw cycles.
<b>Buffer</b>	PBS containing 0.03% sodium azide.
<b>Purification</b>	Affinity Purification

## Immunogen

<b>Gene Name</b>	KIT
<b>Alternative Names</b>	PBT; SCFR; C-Kit; CD117
<b>Gene ID</b>	3815.0
<b>SwissProt ID</b>	P10721.Purified recombinant fragment of human KIT expressed in E. Coli.

## Application

<b>Dilution Ratio</b>	WB:1:500-1:2000,IHC:1:200-1:1000,ELISA:1:10000
<b>Molecular Weight</b>	145kDa

## Background

The c-Kit proto-oncogene is a member of the receptor tyrosine kinase family and, more specifically, is closely related to the

**Product Name: KIT Mouse Monoclonal Antibody**  
**Catalog #: AMM81032**

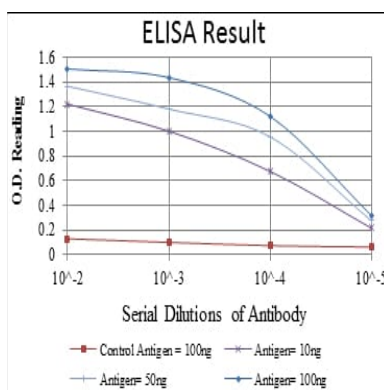


platelet derived growth factor receptor (PDGFR). c-Kit, the normal cellular homolog of the HZ4-feline sarcoma virus transforming gene (v-Kit), encodes a transmembrane receptor. c-Kit regulates a variety of biological responses including chemotaxis, cell proliferation, apoptosis and adhesion. c-Kit is also identical with the product of the W locus in mice and, as such, is integral to the development of mast cells and hematopoiesis. The ligand for the c-Kit receptor (KL) has been identified and is encoded at the murine steel (Sl) locus. Kit is the human homolog of the proto-oncogene c-Kit. Mutations in Kit are integral for tumor growth and progression in various cancers.

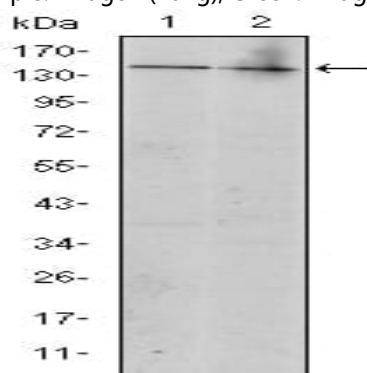
## Research Area

PI3K-Akt signaling pathway, Hippo signaling pathway

## Image Data



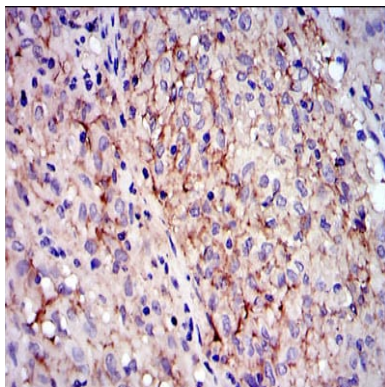
Red: Control Antigen (100ng); Purple: Antigen (10ng); Green: Antigen (50ng); Blue: Antigen (100ng);



Western blot analysis using KIT mouse mAb against Jurkat (1) and Hela (2) cell lysate.

**Product Name: KIT Mouse Monoclonal Antibody**  
**Catalog #: AMM81032**

---



Immunohistochemical analysis of paraffin-embedded human gastrointestinal stromal tumor using KIT mouse mAb with DAB staining.

**Note**

For research use only.