

Summary

Production Name	C-CBL Mouse Monoclonal Antibody
Description	Mouse Monoclonal Antibody
Host	Mouse
Application	WB,IHC,ICC,FC,ELISA
Reactivity	Human,Mouse,Rat,Monkey,Rabbit

Performance

Conjugation	Unconjugated
Modification	Unmodified
Isotype	Mouse IgG1
Clonality	Monoclonal
Form	Liquid
Storage	Store at 4°C short term. Aliquot and store at -20°C long term. Avoid freeze/thaw cycles.
Buffer	Purified antibody in PBS with 0.05% sodium azide.
Purification	Affinity Purification

Immunogen

Gene Name	C-CBL
Alternative Names	CBL; CBL2; NSLL; C-CBL; RNF55
Gene ID	867.0
SwissProt ID	P22681.Purified recombinant fragment of human C-CBL expressed in E. Coli.

Application

Dilution Ratio	WB:1:500-1:2000,IHC:1:100-1:500,ICC:1:50-1:500,FC:1:200-1:400,ELISA:1:10000
Molecular Weight	120kDa

Background

The cbl oncogene was first identified as part of a transforming retrovirus which induces mouse pre-B and pro-B cell

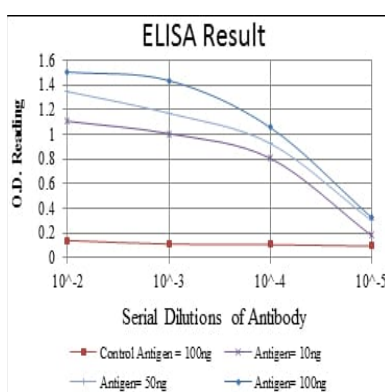
Product Name: C-CBL Mouse Monoclonal Antibody
Catalog #: AMM81023



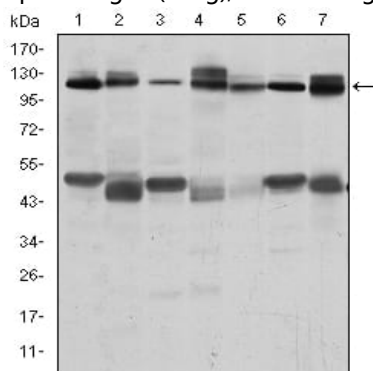
lymphomas. As an adaptor protein for receptor protein-tyrosine kinases, it positively regulates receptor protein-tyrosine kinase ubiquitination in a manner dependent upon its variant SH2 and RING finger domains. Ubiquitination of receptor protein-tyrosine kinases terminates signaling by marking active receptors for degradation.

Research Area

Image Data

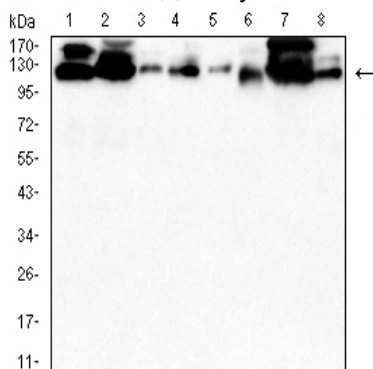


Red: Control Antigen (100ng); Purple: Antigen (10ng); Green: Antigen (50ng); Blue: Antigen (100ng);



Western blot analysis using C-CBL mouse mAb against RAJI (1), RAW264.7 (2), K562 (3), SKBR-3 (4), 3T3-L1 (5), THP-1 (6) and

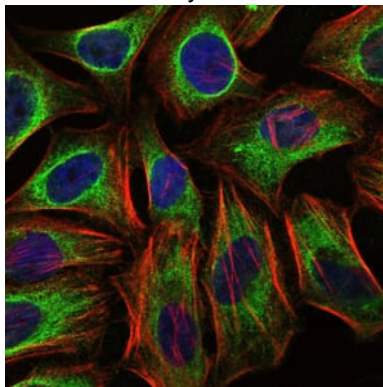
PC-12 (7) cell lysate.



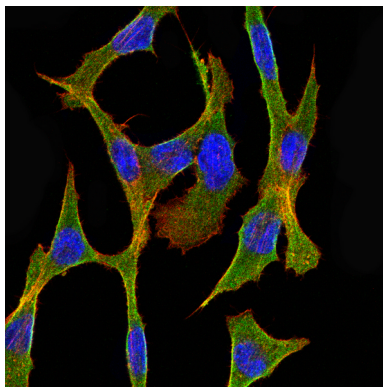
Product Name: C-CBL Mouse Monoclonal Antibody
Catalog #: AMM81023



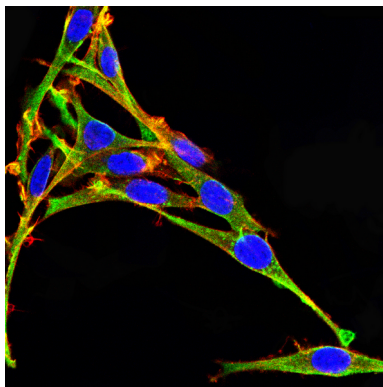
Western blot analysis using C-CBL mouse mAb against PC-12(1)Raw264.7(2)NIH/3T3(3)NRK(4)C2C12(5)C6(6)F9(7)COS-7(8) cell lysate.



Immunofluorescence analysis of Hela cells using C-CBL mouse mAb (green). Blue: DRAQ5 fluorescent DNA dye. Red: Actin filaments have been labeled with Alexa Fluor-555 phalloidin.

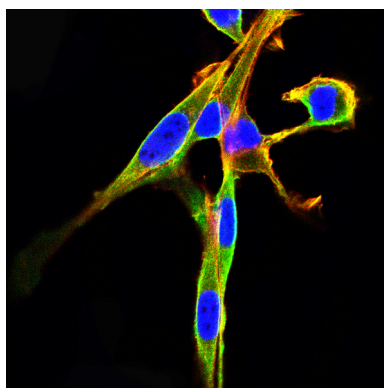


Immunofluorescence analysis of COS7 cells using C-CBL mouse mAb (green). Blue: DRAQ5 fluorescent DNA dye. Red: Actin filaments have been labeled with Alexa Fluor- 555 phalloidin.

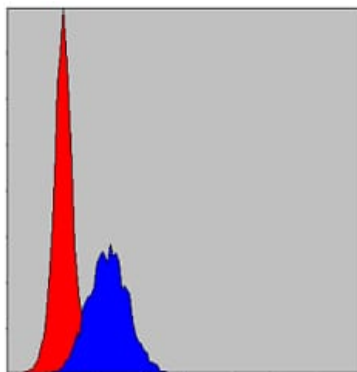


Immunofluorescence analysis of PC-12 cells using C-CBL mouse mAb (green). Blue: DRAQ5 fluorescent DNA dye. Red: Actin filaments have been labeled with Alexa Fluor- 555 phalloidin.

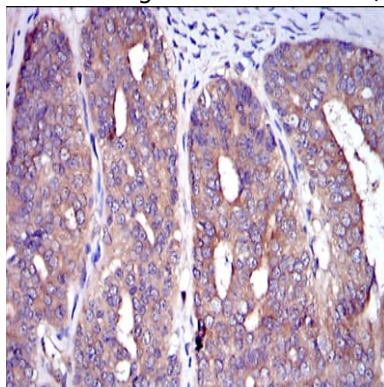
Product Name: C-CBL Mouse Monoclonal Antibody
Catalog #: AMM81023



Immunofluorescence analysis of NIH/3T3 cells using C-CBL mouse mAb (green). Blue: DRAQ5 fluorescent DNA dye. Red: Actin filaments have been labeled with Alexa Fluor- 555 phalloidin.



Flow cytometric analysis of MCF-7 cells using C-CBL mouse mAb (blue) and negative control (red).



Immunohistochemical analysis of paraffin-embedded human ovarian cancer tissues using C-CBL mouse mAb with DAB staining.

Note

For research use only.