

---

**Product Name: MMP1 Mouse Monoclonal Antibody****Catalog #: AMM81011**

For research use only.

**Summary**

|                      |   |
|----------------------|---|
| <b>Description</b>   | Mouse monoclonal Antibody   |
| <b>Host</b>          | Mouse   |
| <b>Application</b>   | IHC,ICC,ELISA,FC  |
| <b>Reactivity</b>    | Human   |
| <b>Conjugation</b>   | Unconjugated  |
| <b>Modification</b>  | Unmodified  |
| <b>Isotype</b>       | Mouse IgG1  |
| <b>Clonality</b>     | Monoclonal  |
| <b>Form</b>          | Liquid  |
| <b>Concentration</b> | 1mg/ml  |
| <b>Storage</b>       | Aliquot and store at -20°C (valid for 12 months). Avoid freeze/thaw cycles. |
| <b>Shipping</b>      | Ice bags  |
| <b>Buffer</b>        | Purified antibody in PBS with 0.05% sodium azide.                           |
| <b>Purification</b>  | Affinity Purification   |

**Application**

|                         |   |
|-------------------------|---|
| <b>Dilution Ratio</b>   | IHC 1:200-1:1000,ICC 1:200-1:1000,ELISA 1:5000-1:20000,FC 1:200-1:400 |
| <b>Molecular Weight</b> | 54kDa   |

**Antigen Information**

|                          |   |
|--------------------------|---|
| <b>Gene Name</b>         | MMP1  |
| <b>Alternative Names</b> | CLG; CLGN   |
| <b>Gene ID</b>           | 4312.0  |
| <b>SwissProt ID</b>      | P08253  |
| <b>Immunogen</b>         | Purified recombinant fragment of human MMP1 expressed in E. Coli. |

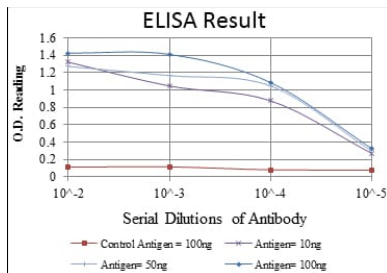
**Background**

Proteins of the matrix metalloproteinase (MMP) family are involved in the breakdown of extracellular matrix in normal physiological processes, such as embryonic development, reproduction, and tissue remodeling, as well as in disease processes, such as arthritis and metastasis. Most MMP's are secreted as inactive proproteins which are activated when cleaved by

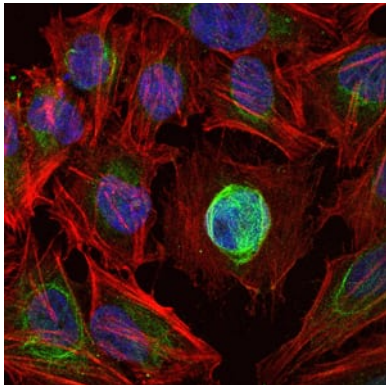
extracellular proteinases. This gene encodes a secreted enzyme which breaks down the interstitial collagens, types I, II, and III. The gene is part of a cluster of MMP genes which localize to chromosome 11q22.3. Alternative splicing results in multiple transcript variants.

## Research Area

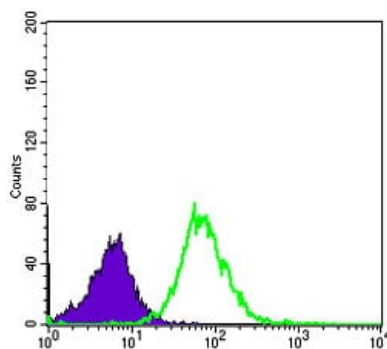
## Image Data



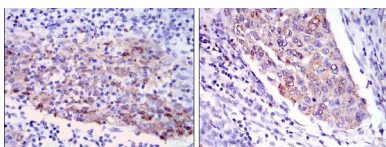
Red: Control Antigen (100ng); Purple: Antigen (10ng); Green: Antigen (50ng); Blue: Antigen (100ng);



Immunofluorescence analysis of HeLa cells using MMP1 mouse mAb (green). Blue: DRAQ5 fluorescent DNA dye. Red: Actin filaments have been labeled with Alexa Fluor-555 phalloidin.



Flow cytometric analysis of HeLa cells using MMP1 mouse mAb (green) and negative control (purple).



Immunohistochemical analysis of paraffin-embedded human cervical cancer tissues (left) and human kidney cancer tissues (right) using MMP1 mouse mAb with DAB staining.