
Product Name: ABCG2 Mouse Monoclonal Antibody**Catalog #: AMM80991**

For research use only.

Summary

Description	Mouse monoclonal Antibody
Host	Mouse
Application	WB,IHC,ICC,ELISA,FC
Reactivity	Human,Mouse,Rat,Rabbit,Monkey
Conjugation	Unconjugated
Modification	Unmodified
Isotype	Mouse IgG1
Clonality	Monoclonal
Form	Liquid
Concentration	1mg/ml
Storage	Aliquot and store at -20°C (valid for 12 months). Avoid freeze/thaw cycles.
Shipping	Ice bags
Buffer	Purified antibody in PBS with 0.05% sodium azide.
Purification	Affinity Purification

Application

Dilution Ratio	WB 1:500-1:2000,IHC 1:100-1:500,ICC 1:50-1:500,ELISA 1:5000-1:20000,FC 1:200-1:400
Molecular Weight	72kDa

Antigen Information

Gene Name	ABCG2
Alternative Names	MRX; MXR; ABCP; BCRP; BMDP; MXR1; ABC15; BCRP1; CD338; CDw338; EST157481; MGC102821
Gene ID	9429.0
SwissProt ID	Q9UNQ0
Immunogen	Purified recombinant fragment of human ABCG2 expressed in E. Coli.

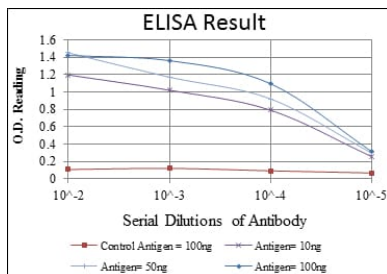
Background

The membrane-associated protein encoded by this gene is included in the superfamily of ATP-binding cassette (ABC) transporters. ABC proteins transport various molecules across extra- and intra-cellular membranes. ABC genes are divided into

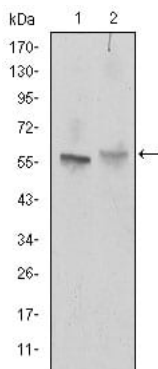
seven distinct subfamilies (ABC1, MDR/TAP, MRP, ALD, OABP, GCN20, White). This protein is a member of the White subfamily. Alternatively referred to as a breast cancer resistance protein, this protein functions as a xenobiotic transporter which may play a major role in multi-drug resistance. It likely serves as a cellular defense mechanism in response to mitoxantrone and anthracycline exposure. Significant expression of this protein has been observed in the placenta, which may suggest a potential role for this molecule in placenta tissue. Tissue specificity: Highly expressed in placenta. Low expression in small intestine, liver and colon.

Research Area

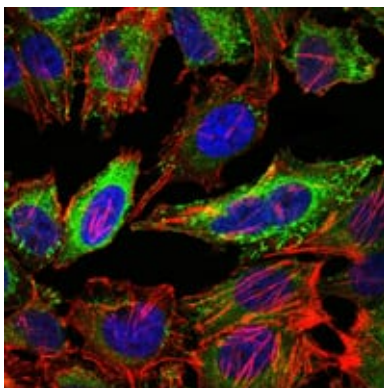
Image Data



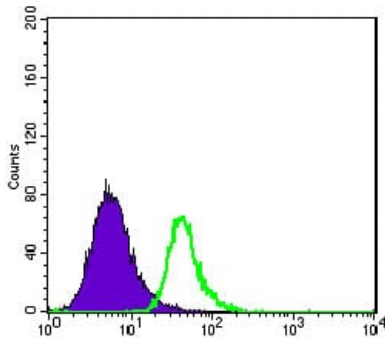
Red: Control Antigen (100ng); Purple: Antigen (10ng); Green: Antigen (50ng); Blue: Antigen (100ng);



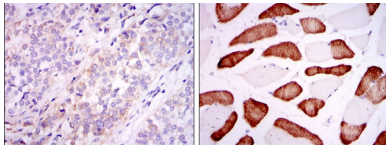
Western blot analysis using ABCG2 mouse mAb against NIH/3T3 (1) and Cos7 (2) cell lysate.



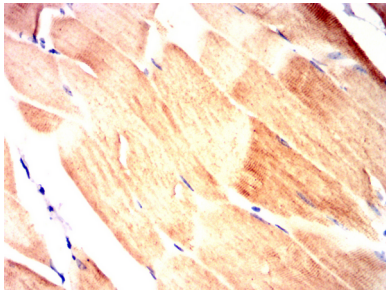
Immunofluorescence analysis of HeLa cells using ABCG2 mouse mAb (green). Blue: DRAQ5 fluorescent DNA dye. Red: Actin filaments have been labeled with Alexa Fluor-555 phalloidin.



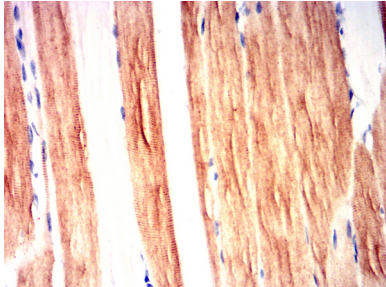
Flow cytometric analysis of HepG2 cells using ABCG2 mouse mAb (green) and negative control (purple).



Immunohistochemical analysis of paraffin-embedded human bladder cancer tissues (left) and skeletal muscle tissues (right) using ABCG2 mouse mAb with DAB staining.



Immunohistochemical analysis of paraffin-embedded Mouse muscle using ABCG2 mouse mAb with DAB staining.



Immunohistochemical analysis of paraffin-embedded Rat muscle using ABCG2 mouse mAb with DAB staining.



Immunohistochemical analysis of paraffin-embedded Rabbit muscle using ABCG2 mouse mAb with DAB staining.