

---

**Product Name: EEF2 Mouse Monoclonal Antibody****Catalog #: AMM80970**

For research use only.

**Summary**

|                      |   |
|----------------------|---|
| <b>Description</b>   | Mouse monoclonal Antibody   |
| <b>Host</b>          | Mouse   |
| <b>Application</b>   | WB,IHC,ICC,ELISA  |
| <b>Reactivity</b>    | Human   |
| <b>Conjugation</b>   | Unconjugated  |
| <b>Modification</b>  | Unmodified  |
| <b>Isotype</b>       | Mouse IgG1  |
| <b>Clonality</b>     | Monoclonal  |
| <b>Form</b>          | Liquid  |
| <b>Concentration</b> | 1mg/ml  |
| <b>Storage</b>       | Aliquot and store at -20°C (valid for 12 months). Avoid freeze/thaw cycles. |
| <b>Shipping</b>      | Ice bags  |
| <b>Buffer</b>        | Purified antibody in PBS with 0.05% sodium azide.                           |
| <b>Purification</b>  | Affinity Purification   |

**Application**

|                         |  |
|-------------------------|--|
| <b>Dilution Ratio</b>   | WB 1:500-1:2000,IHC 1:200-1:1000,ICC 1:200-1:1000,ELISA 1:5000-1:20000 |
| <b>Molecular Weight</b> | 95kDa  |

**Antigen Information**

|                          |   |
|--------------------------|---|
| <b>Gene Name</b>         | EEF2  |
| <b>Alternative Names</b> | EF2; EEF-2; EEF2  |
| <b>Gene ID</b>           | 1938.0  |
| <b>SwissProt ID</b>      | P13639  |
| <b>Immunogen</b>         | Purified recombinant fragment of human EEF2 expressed in E. Coli. |

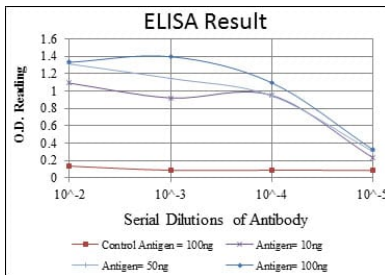
**Background**

This gene encodes a member of the GTP-binding translation elongation factor family. This protein is an essential factor for protein synthesis. It promotes the GTP-dependent translocation of the nascent protein chain from the A-site to the P-site of the ribosome. This protein is completely inactivated by EF-2 kinase phosphorylation. (provided by RefSeq)

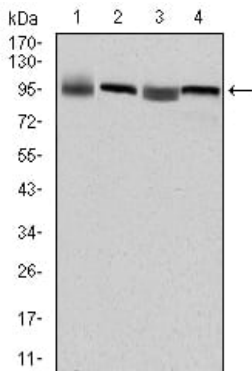
## Research Area

mTOR signaling pathway

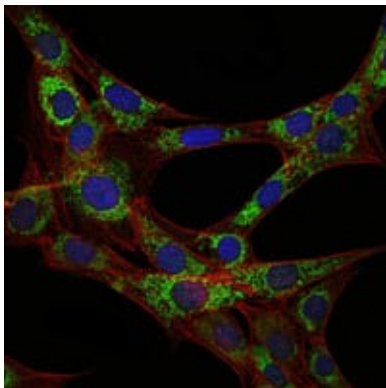
## Image Data



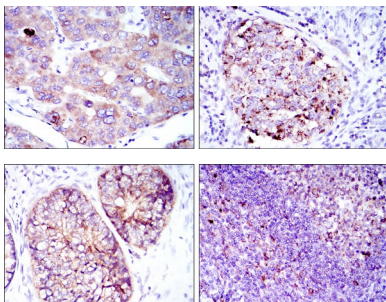
Red: Control Antigen (100ng); Purple: Antigen (10ng); Green: Antigen (50ng); Blue: Antigen (100ng);



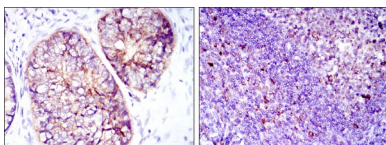
Western blot analysis using EEf2 mouse mAb against HepG2 (1), HeLa (2), HEK293 (3) and A431 (4) cell lysate.



Immunofluorescence analysis of 3T3-L1 cells using EEf2 mouse mAb (green). Blue: DRAQ5 fluorescent DNA dye. Red: Actin filaments have been labeled with Alexa Fluor-555 phalloidin.



Immunohistochemical analysis of paraffin-embedded human liver cancer tissues (left) and kidney cancer tissues (right) using EEf2 mouse mAb with DAB staining.



Immunohistochemical analysis of paraffin-embedded human prostate cancer tissues (left) and tonsil tissues (right) using EEf2 mouse mAb with DAB staining.