

Product Name: MSI2 Mouse Monoclonal Antibody**Catalog #: AMM80959**

For research use only.

Summary

Description	Mouse monoclonal Antibody
Host	Mouse
Application	WB,IHC,ELISA
Reactivity	Human
Conjugation	Unconjugated
Modification	Unmodified
Isotype	Mouse IgG1
Clonality	Monoclonal
Form	Liquid
Concentration	1mg/ml
Storage	Aliquot and store at -20°C (valid for 12 months). Avoid freeze/thaw cycles.
Shipping	Ice bags
Buffer	Purified antibody in PBS with 0.05% sodium azide.
Purification	Affinity Purification

Application

Dilution Ratio	WB 1:500-1:2000,IHC 1:200-1:1000,ELISA 1:5000-1:20000
Molecular Weight	35kDa

Antigen Information

Gene Name	MSI2
Alternative Names	MSI2H; MGC3245; FLJ36569; MSI2
Gene ID	124540.0
SwissProt ID	Q96DH6
Immunogen	Purified recombinant fragment of human MSI2 expressed in E. Coli.

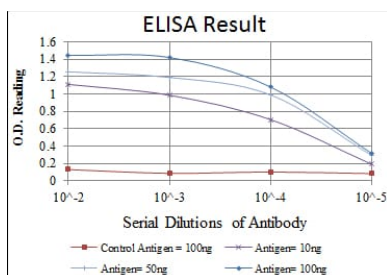
Background

Msi2 (musashi homolog 2), also known as MSI2H, is a 328 amino acid protein that localizes to the cytoplasm and contains two RRM (RNA recognition motif) domains. Expressed ubiquitously at low levels, Msi2 functions as an RNA binding protein that, by regulating the expression of target mRNAs, is thought to play a role in the proliferation and maintenance of stem cells within

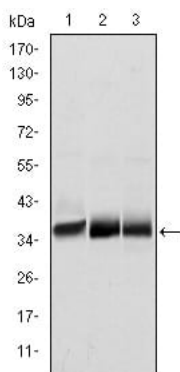
the central nervous system. Msi2 is subject to posttranslational phosphorylation and is upregulated in response to brain injury, suggesting a role in healing and brain tissue regeneration. Chromosomal aberrations involving the Msi2 gene are associated with the progression of chronic myeloid leukemia. Multiple isoforms of Msi2 exist due to alternative splicing events. Tissue specificity: Ubiquitous; detected at low levels.

Research Area

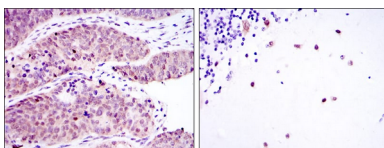
Image Data



Red: Control Antigen (100ng); Purple: Antigen (10ng); Green: Antigen (50ng); Blue: Antigen (100ng);



Western blot analysis using MSI2 mouse mAb against NTERA-2 (1), SW620 (2) and T47D (3) cell lysate.



Immunohistochemical analysis of paraffin-embedded human ovarian cancer (left) and cerebellum tissues (right) using MSI2 mouse mAb with DAB staining.