

**Product Name: MAP2K6 Mouse Monoclonal Antibody**  
**Catalog #: AMM80948**



## Summary

<b>Production Name</b>	MAP2K6 Mouse Monoclonal Antibody
<b>Description</b>	Mouse Monoclonal Antibody
<b>Host</b>	Mouse
<b>Application</b>	WB,ICC,FC,ELISA
<b>Reactivity</b>	Human,Mouse

## Performance

<b>Conjugation</b>	Unconjugated
<b>Modification</b>	Unmodified
<b>Isotype</b>	Mouse IgG1
<b>Clonality</b>	Monoclonal
<b>Form</b>	Liquid
<b>Storage</b>	Store at 4°C short term. Aliquot and store at -20°C long term. Avoid freeze/thaw cycles.
<b>Buffer</b>	PBS containing 0.03% sodium azide.
<b>Purification</b>	Affinity Purification

## Immunogen

<b>Gene Name</b>	MAP2K6
<b>Alternative Names</b>	MEK6; MKK6; MAPKK6; PRKMK6; SAPKK3; MAP2K6
<b>Gene ID</b>	5608.0
<b>SwissProt ID</b>	P52564.Purified recombinant fragment of human MAP2K6 expressed in E. Coli.

## Application

<b>Dilution Ratio</b>	WB:1:500-1:2000,ICC:1:200-1:1000,FC:1:200-1:400,ELISA:1:10000
<b>Molecular Weight</b>	38kDa

## Background

This gene encodes a member of the dual specificity protein kinase family, which functions as a mitogen-activated protein

**Product Name: MAP2K6 Mouse Monoclonal Antibody**  
**Catalog #: AMM80948**

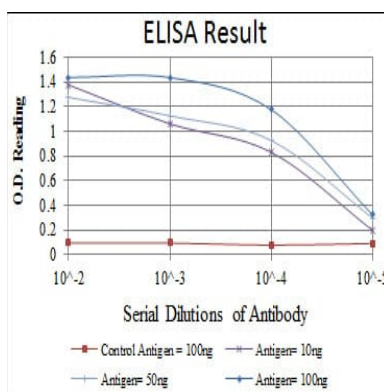


(MAP) kinase kinase. MAP kinases, also known as extracellular signal-regulated kinases (ERKs), act as an integration point for multiple biochemical signals. This protein phosphorylates and activates p38 MAP kinase in response to inflammatory cytokines or environmental stress. As an essential component of p38 MAP kinase mediated signal transduction pathway, this gene is involved in many cellular processes such as stress induced cell cycle arrest, transcription activation and apoptosis. Tissue specificity: Isoform 2 is only expressed in skeletal muscle. Isoform 1, on the other hand, is found in skeletal muscle, heart, and in lesser extent in liver or pancreas .

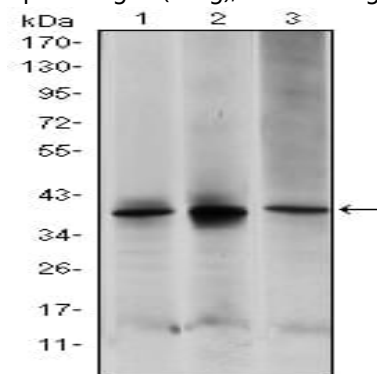
## Research Area

Apoptosis, TGF-beta signaling pathway, MAPK signaling pathway, Jak-STAT signaling pathway

## Image Data

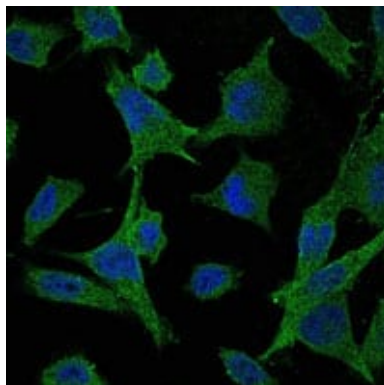


Red: Control Antigen (100ng); Purple: Antigen (10ng); Green: Antigen (50ng); Blue: Antigen (100ng);

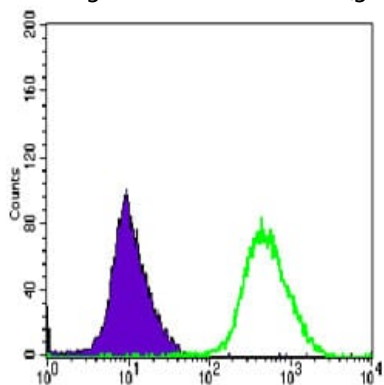


Western blot analysis using MAP2K6 mouse mAb against HepG2 (1), MCF-7 (2) and NIH/3T3 (3) cell lysate.

**Product Name: MAP2K6 Mouse Monoclonal Antibody**  
**Catalog #: AMM80948**



Immunofluorescence analysis of HeLa cells using MAP2K6 mouse mAb (green). Blue: DRAQ5 fluorescent DNA dye.



Flow cytometric analysis of HeLa cells using MAP2K6 mouse mAb (green) and negative control (purple).

## Note

For research use only.