
Product Name: CTCF Mouse Monoclonal Antibody**Catalog #: AMM80935**

For research use only.

Summary

Description	Mouse monoclonal Antibody
Host	Mouse
Application	WB,ELISA
Reactivity	Human,Monkey
Conjugation	Unconjugated
Modification	Unmodified
Isotype	Mouse IgG1
Clonality	Monoclonal
Form	Liquid
Concentration	1mg/ml
Storage	Aliquot and store at -20°C (valid for 12 months). Avoid freeze/thaw cycles.
Shipping	Ice bags
Buffer	PBS containing 0.03% sodium azide.
Purification	Affinity Purification

Application

Dilution Ratio	WB 1:500-1:2000,ELISA 1:5000-1:20000
Molecular Weight	83kDa

Antigen Information

Gene Name	CTCF
Alternative Names	CTCF
Gene ID	10664.0
SwissProt ID	P49711
Immunogen	Purified recombinant fragment of human CTCF expressed in E. Coli.

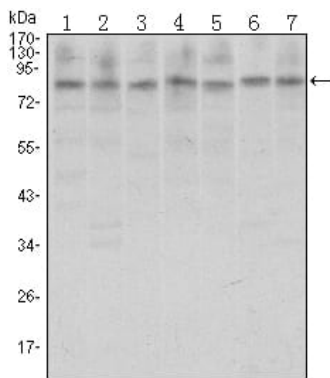
Background

This gene is a member of the BORIS + CTCF gene family and encodes a transcriptional regulator protein with 11 highly conserved zinc finger (ZF) domains. This nuclear protein is able to use different combinations of the ZF domains to bind different DNA target sequences and proteins. Depending upon the context of the site, the protein can bind a histone

acetyltransferase (HAT)-containing complex and function as a transcriptional activator or bind a histone deacetylase (HDAC)-containing complex and function as a transcriptional repressor. If the protein is bound to a transcriptional insulator element, it can block communication between enhancers and upstream promoters, thereby regulating imprinted expression. Mutations in this gene have been associated with invasive breast cancers, prostate cancers, and Wilms' tumors. Tissue specificity: Ubiquitous. Absent in primary spermatocytes.

Research Area

Image Data



Western blot analysis using CTCF mouse mAb against A31 (1), MCF-7 (2), Hela (3), HCT116 (4), Jurkat (5), NIH/3T3 (6), and Cos7 (7) cell lysate.