
Product Name: SETDB1 Mouse Monoclonal Antibody**Catalog #: AMM80918**

For research use only.

Summary

Description	Mouse monoclonal Antibody
Host	Mouse
Application	WB,ICC,ELISA
Reactivity	Human,Mouse,Monkey
Conjugation	Unconjugated
Modification	Unmodified
Isotype	Mouse IgG1
Clonality	Monoclonal
Form	Liquid
Concentration	1mg/ml
Storage	Aliquot and store at -20°C (valid for 12 months). Avoid freeze/thaw cycles.
Shipping	Ice bags
Buffer	Purified antibody in PBS with 0.05% sodium azide.
Purification	Affinity Purification

Application

Dilution Ratio	WB 1:500-1:2000,ICC 1:200-1:1000,ELISA 1:5000-1:20000
Molecular Weight	180kDa

Antigen Information

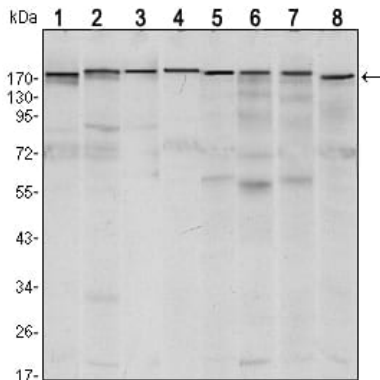
Gene Name	SETDB1
Alternative Names	ESET; KG1T; KMT1E; KIAA0067; H3-K9-HMTase4; SETDB1
Gene ID	9869.0
SwissProt ID	Q15047
Immunogen	Purified recombinant fragment of human SETDB1 expressed in E. Coli.

Background

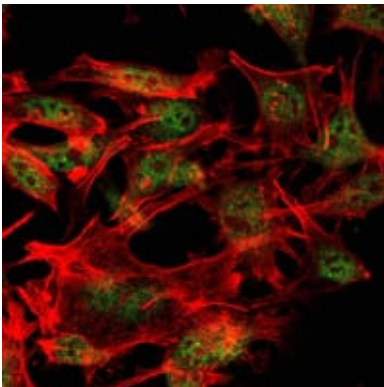
This gene encodes a histone methyltransferase. The encoded enzyme catalyzes the reaction of S-adenosyl-L-methionine and histone L-lysine to produce S-adenosyl-L-homocysteine and histone N(6)-methyl-L-lysine. The encoded protein likely functions in transcriptional repression. Alternatively spliced transcript variants have been described.

Research Area

Image Data



Western blot analysis using SETDB1 mouse mAb against MCF-7 (1), T47D (2), HEK293 (3), JURKAT (4), NIH/3T3 (5), F9 (6), RAW246.7 (7) and Cos7 (8) cell lysate.



Immunofluorescence analysis of LOVO cells using SETDB1 mouse mAb (green). Red: Actin filaments have been labeled with Alexa Fluor-555 phalloidin.