

**Product Name: CCNB1 Mouse Monoclonal Antibody****Catalog #: AMM80903**

For research use only.

**Summary**

<b>Description</b>	Mouse monoclonal Antibody
<b>Host</b>	Mouse
<b>Application</b>	WB,IHC,ELISA
<b>Reactivity</b>	Human
<b>Conjugation</b>	Unconjugated
<b>Modification</b>	Unmodified
<b>Isotype</b>	Mouse IgG1
<b>Clonality</b>	Monoclonal
<b>Form</b>	Liquid
<b>Concentration</b>	1mg/ml
<b>Storage</b>	Aliquot and store at -20°C (valid for 12 months). Avoid freeze/thaw cycles.
<b>Shipping</b>	Ice bags
<b>Buffer</b>	PBS containing 0.03% sodium azide.
<b>Purification</b>	Affinity Purification

**Application**

<b>Dilution Ratio</b>	WB 1:500-1:2000,IHC 1:200-1:1000,ELISA 1:5000-1:20000
<b>Molecular Weight</b>	60kDa

**Antigen Information**

<b>Gene Name</b>	CCNB1
<b>Alternative Names</b>	CCNB; CCNB1
<b>Gene ID</b>	891.0
<b>SwissProt ID</b>	P14635
<b>Immunogen</b>	Purified recombinant fragment of human CCNB1 expressed in E. Coli.

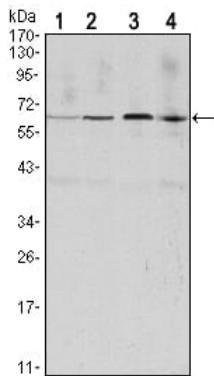
**Background**

The protein encoded by this gene is a regulatory protein involved in mitosis. The gene product complexes with p34(cdc2) to form the maturation-promoting factor (MPF). Two alternative transcripts have been found, a constitutively expressed transcript and a cell cycle-regulated transcript, that is expressed predominantly during G2/M phase. The different transcripts result from

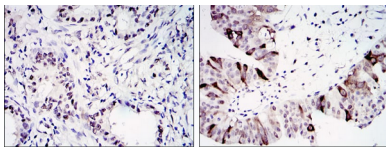
the use of alternate transcription initiation sites. (provided by RefSeq) It has higher expression in tumor tissues .

## Research Area

## Image Data



Western blot analysis using CcNB1 mouse mAb against HeLa (1), Jurkat (2), K562 (3) and PC-12 (4) cell lysate.



Immunohistochemical analysis of paraffin-embedded human lung cancer (left) and ovary tumour tissues (right) using CcNB1 mouse mAb with DAB staining.