
Product Name: KLHL1 Mouse Monoclonal Antibody**Catalog #: AMM80898**

For research use only.

Summary

Description	Mouse monoclonal Antibody
Host	Mouse
Application	ICC,ELISA
Reactivity	Human
Conjugation	Unconjugated
Modification	Unmodified
Isotype	Mouse IgG1
Clonality	Monoclonal
Form	Liquid
Concentration	1mg/ml
Storage	Aliquot and store at -20°C (valid for 12 months). Avoid freeze/thaw cycles.
Shipping	Ice bags
Buffer	PBS containing 0.03% sodium azide.
Purification	Affinity Purification

Application

Dilution Ratio	ICC 1:200-1:1000,ELISA 1:5000-1:20000
Molecular Weight	82kDa

Antigen Information

Gene Name	KLHL1
Alternative Names	MRP2; FLJ30047; KIAA1490; KLHL1
Gene ID	57626.0
SwissProt ID	Q9NR64
Immunogen	Purified recombinant fragment of human KLHL1 expressed in E. Coli.

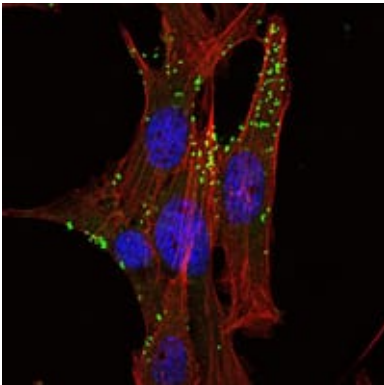
Background

The mammalian Kelch like 1 (KLHL1) was initially discovered as a homolog to the Drosophila Kelch gene that is highly expressed in several brain tissues. The predicted protein domain structure of KLHL1 is characteristic of a number of proteins that bind actin, form dimers, and often act as actin organizing proteins. Based on the presence of anti sense RNA that spans the

transcription and translation start sites as well as the first splice site of KLHL1 in brain tissue of individuals suffering from the neurodegenerative disorder spinocerebellar ataxia type 8 (SCA8), it has been suggested that KLHL1 is involved in this disease and that regulation of KLHL1 protein may be affected by antisense RNA expression. Tissue specificity: Highly expressed in brain.

Research Area

Image Data



Immunofluorescence analysis of NIH/3T3 cells using KLHL1 mouse mAb (green). Red: Actin filaments have been labeled with Alexa Fluor-555 phalloidin.