

Product Name: KLHL22 Mouse Monoclonal Antibody**Catalog #: AMM80897**

For research use only.

Summary

Description	Mouse monoclonal Antibody
Host	Mouse
Application	WB,ICC,ELISA
Reactivity	Human
Conjugation	Unconjugated
Modification	Unmodified
Isotype	Mouse IgG1
Clonality	Monoclonal
Form	Liquid
Concentration	1mg/ml
Storage	Aliquot and store at -20°C (valid for 12 months). Avoid freeze/thaw cycles.
Shipping	Ice bags
Buffer	PBS containing 0.03% sodium azide.
Purification	Affinity Purification

Application

Dilution Ratio	WB 1:500-1:2000,ICC 1:200-1:1000,ELISA 1:5000-1:20000
Molecular Weight	72kDa

Antigen Information

Gene Name	KLHL22
Alternative Names	KELCHL; KLHL22
Gene ID	84861.0
SwissProt ID	Q53GT1
Immunogen	Purified recombinant fragment of human KLHL22 expressed in E. Coli.

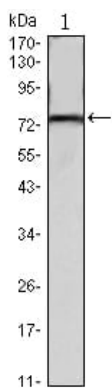
Background

KLHL22 (kelch-like protein 22) is a 634 amino acid protein that is related to the Drosophilakelch protein, which is required to maintain Actin organization in ovarian ring canals. Mutations affecting Kelch function result in the failure of Kelch to associate with the ring canals and subsequent female sterility. Human KLHL22 protein contains six kelch repeats and one BTB (POZ)

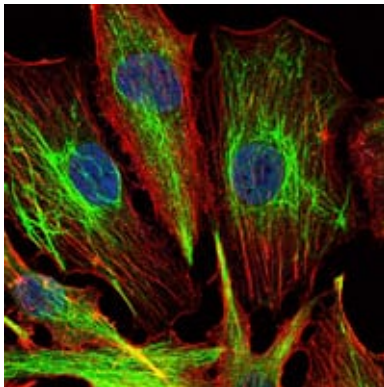
domain. The BTB (Broad-Complex, Tramtrack and Bric a brac) domain, also known as the POZ (Poxvirus and Zinc finger) domain, is an N-terminal homodimerization domain that contains multiple copies of kelch repeats and/or C2H2-type zinc fingers. Proteins that contain BTB domains are thought to be involved in transcriptional regulation via control of chromatin structure and function. There are two isoforms of KLHL22 that are produced as a result of alternative splicing events.

Research Area

Image Data



Western blot analysis using KLHL22 mouse mAb against mouse brain tissues lysate.



Immunofluorescence analysis of U251 cells using KLHL22 mouse mAb (green). Blue: DRAQ5 fluorescent DNA dye. Red: Actin filaments have been labeled with Alexa Fluor-555 phalloidin.