
Product Name: PTH1R Mouse Monoclonal Antibody**Catalog #: AMM80878**

For research use only.

Summary

Description	Mouse monoclonal Antibody
Host	Mouse
Application	IHC,ICC,ELISA
Reactivity	Human
Conjugation	Unconjugated
Modification	Unmodified
Isotype	Mouse IgG1
Clonality	Monoclonal
Form	Liquid
Concentration	1mg/ml
Storage	Aliquot and store at -20°C (valid for 12 months). Avoid freeze/thaw cycles.
Shipping	Ice bags
Buffer	Purified antibody in PBS with 0.05% sodium azide.
Purification	Affinity Purification

Application

Dilution Ratio	IHC 1:200-1:1000,ICC 1:200-1:1000,ELISA 1:5000-1:20000
Molecular Weight	66kDa

Antigen Information

Gene Name	PTH1R
Alternative Names	PFE; PTHR; PTHR1; MGC138426; MGC138452; PTH1R
Gene ID	5745.0
SwissProt ID	Q03431
Immunogen	Purified recombinant fragment of human PTH1R expressed in E. Coli.

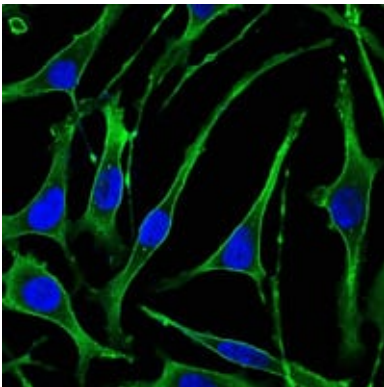
Background

The protein encoded by this gene is a member of the G-protein coupled receptor family 2. This protein is a receptor for parathyroid hormone (PTH) and for parathyroid hormone-like hormone (PTH1LH). The activity of this receptor is mediated by G proteins which activate adenylyl cyclase and also a phosphatidylinositol-calcium second messenger system. Defects in this

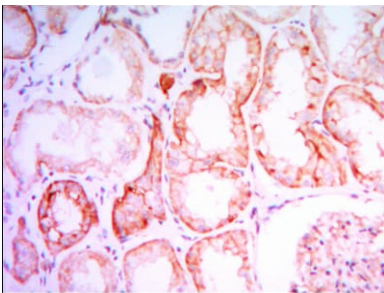
receptor are known to be the cause of Jansen's metaphyseal chondrodysplasia (JMC), chondrodysplasia Blomstrand type (BOCD), as well as enchondromatosis. Two transcript variants encoding the same protein have been found for this gene.

Research Area

Image Data



Immunofluorescence analysis of SK-BR-3 cells using PTH1R mouse mAb (green). Blue: DRAQ5 fluorescent DNA dye.



Immunohistochemical analysis of paraffin-embedded human kidney tissues using PTH1R mouse mAb with DAB staining.