

**Product Name: KLF4 Mouse Monoclonal Antibody****Catalog #: AMM80874**

For research use only.

**Summary**

<b>Description</b>	Mouse monoclonal Antibody
<b>Host</b>	Mouse
<b>Application</b>	IHC,ELISA
<b>Reactivity</b>	Human
<b>Conjugation</b>	Unconjugated
<b>Modification</b>	Unmodified
<b>Isotype</b>	Mouse IgG1
<b>Clonality</b>	Monoclonal
<b>Form</b>	Liquid
<b>Concentration</b>	1mg/ml
<b>Storage</b>	Aliquot and store at -20°C (valid for 12 months). Avoid freeze/thaw cycles.
<b>Shipping</b>	Ice bags
<b>Buffer</b>	PBS containing 0.03% sodium azide.
<b>Purification</b>	Affinity Purification

**Application**

<b>Dilution Ratio</b>	IHC 1:200-1:1000,ELISA 1:5000-1:20000
<b>Molecular Weight</b>	55kDa

**Antigen Information**

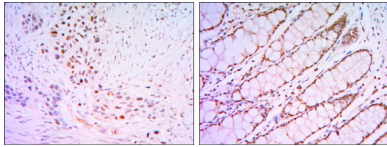
<b>Gene Name</b>	KLF4
<b>Alternative Names</b>	EZF; GKLF; KLF4
<b>Gene ID</b>	9314.0
<b>SwissProt ID</b>	O43474
<b>Immunogen</b>	Purified recombinant fragment of human KLF4 (AA: 2-470) expressed in E. Coli.

**Background**

Kruppel-like factor 4 (gut),endothelial Kruppel-like zinc finger protein. May act as a transcriptional activator. Binds the CACCC core sequence. May be involved in the differentiation of epithelial cells and may also function in the development of the skeleton and kidney. KLF4 is highly expressed in the epithelial cells of the skin and the gastrointestinal tract.

## Research Area

### Image Data



Immunohistochemical analysis of paraffin-embedded human lung cancer tissues (left) and human rectum tissues (right) using KLF4 mouse mAb with DAB staining.