

**Product Name: CDH2 Mouse Monoclonal Antibody****Catalog #: AMM80844**

For research use only.

**Summary**

<b>Description</b>	Mouse monoclonal Antibody
<b>Host</b>	Mouse
<b>Application</b>	WB,IHC,ICC,ELISA,FC
<b>Reactivity</b>	Human,Mouse,Rat,Rabbit,Monkey
<b>Conjugation</b>	Unconjugated
<b>Modification</b>	Unmodified
<b>Isotype</b>	Mouse IgG1
<b>Clonality</b>	Monoclonal
<b>Form</b>	Liquid
<b>Concentration</b>	1mg/ml
<b>Storage</b>	Aliquot and store at -20°C (valid for 12 months). Avoid freeze/thaw cycles.
<b>Shipping</b>	Ice bags
<b>Buffer</b>	Purified antibody in PBS with 0.05% sodium azide.
<b>Purification</b>	Affinity Purification

**Application**

<b>Dilution Ratio</b>	WB 1:500-1:2000,IHC 1:200-1:1000,ICC 1:200-1:1000,ELISA 1:5000-1:20000,FC 1:200-1:400
<b>Molecular Weight</b>	99.8kDa

**Antigen Information**

<b>Gene Name</b>	CDH2
<b>Alternative Names</b>	CDHN; NCAD; CD325; CDw325; CDH2
<b>Gene ID</b>	1000.0
<b>SwissProt ID</b>	P19022
<b>Immunogen</b>	Purified recombinant fragment of human CDH2 expressed in E. Coli.

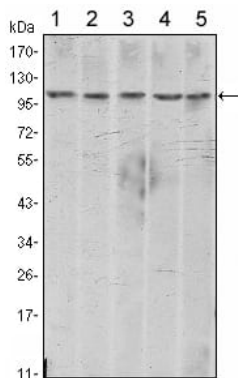
**Background**

This gene is a classical cadherin from the cadherin superfamily. The encoded protein is a calcium dependent cell-cell adhesion glycoprotein comprised of five extracellular cadherin repeats, a transmembrane region and a highly conserved cytoplasmic tail. The protein functions during gastrulation and is required for establishment of left-right asymmetry. At certain central nervous

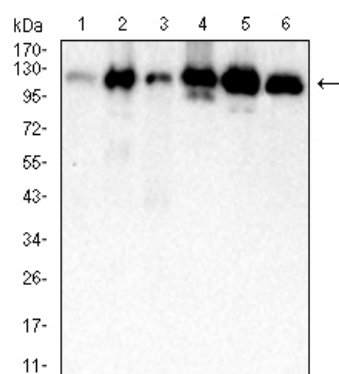
system synapses, presynaptic to postsynaptic adhesion is mediated at least in part by this gene product.

## Research Area

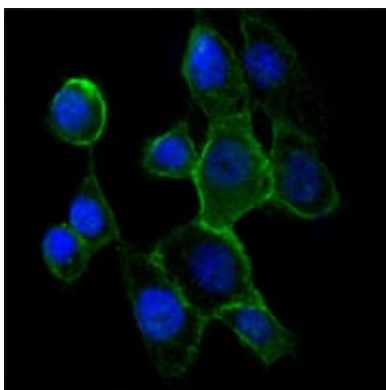
## Image Data



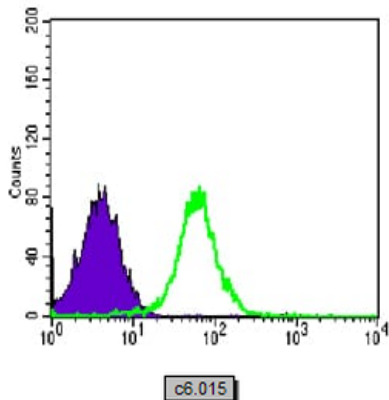
Western blot analysis using CDH2 mouse mAb against A431 (1), NIH/3T3 (2), HeLa (3), C6 (4) and LNCap (5) cell lysate.



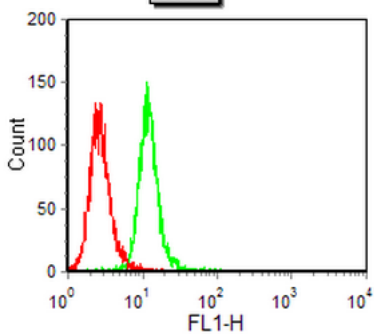
Western blot analysis using CDH2 mouse mAb against COS7(1),NRK(2),NIH/3T3(3),PC-12(4) cell lysate.



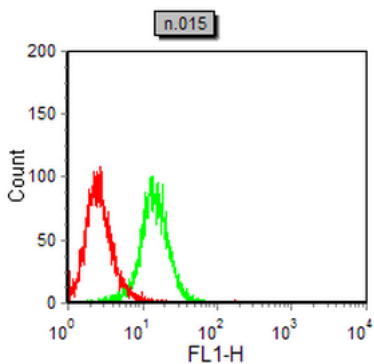
Immunofluorescence analysis of A431 cells using CDH2 mouse mAb (green). Blue: DRAQ5 fluorescent DNA dye.



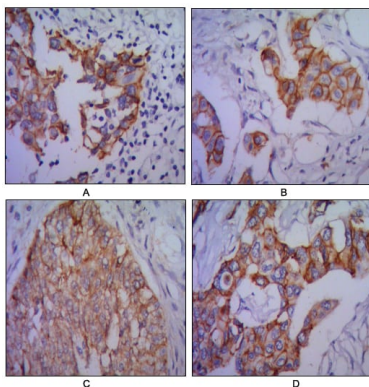
Flow cytometric analysis of PC-2 cells using CDH2 mouse mAb (green) and negative control (purple).



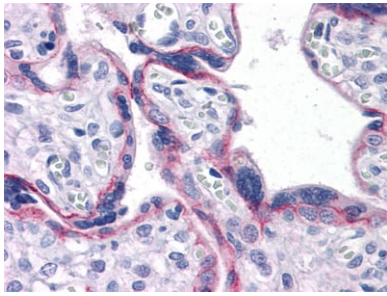
Flow cytometric analysis of C6 cells using CDH2 mouse mAb (green) and negative control (red).



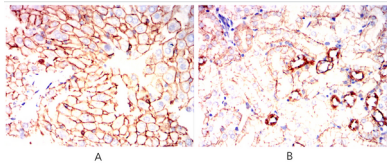
Flow cytometric analysis of NIH/3T3 cells using CDH2 mouse mAb (green) and negative control (red).



Immunohistochemical analysis of paraffin-embedded human lung cancer (A), colon cancer (B), ovarian cancer (C) and mammary cancer (D), using CDH2 mouse mAb with DAB staining.



Immunohistochemical analysis of paraffin-embedded human Placenta tissues using CDH2 mouse mAb



Immunohistochemical analysis of paraffin-embedded Mouse liver(A) Mouse kidney(B) using CDH2 mouse mAb with DAB staining.