

Product Name: SOD1 Mouse Monoclonal Antibody
Catalog #: AMM80742



Summary

Production Name	SOD1 Mouse Monoclonal Antibody
Description	Mouse Monoclonal Antibody
Host	Mouse
Application	WB,ICC,FC,ELISA
Reactivity	Human,Mouse

Performance

Conjugation	Unconjugated
Modification	Unmodified
Isotype	Mouse IgG1
Clonality	Monoclonal
Form	Liquid
Storage	Store at 4°C short term. Aliquot and store at -20°C long term. Avoid freeze/thaw cycles.
Buffer	Purified antibody in PBS with 0.05% sodium azide.
Purification	Affinity Purification

Immunogen

Gene Name	SOD1
Alternative Names	ALS; SOD; ALS1; IPOA; homodimer
Gene ID	6647.0
SwissProt ID	P00441.Purified recombinant fragment of human SOD1 expressed in E. Coli.

Application

Dilution Ratio	WB:1:500-1:2000,ICC:1:200-1:1000,FC:1:200-1:400,ELISA:1:10000
Molecular Weight	18kDa

Background

SOD1 (superoxide dismutase 1, soluble), also known as ALS. The protein binds copper and zinc ions and is one of two

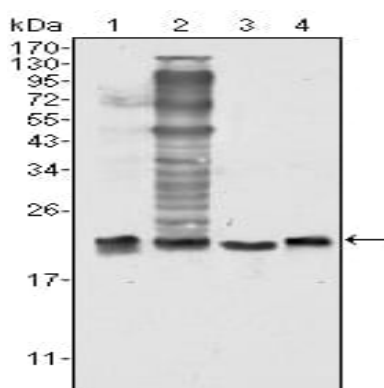
Product Name: SOD1 Mouse Monoclonal Antibody
Catalog #: AMM80742



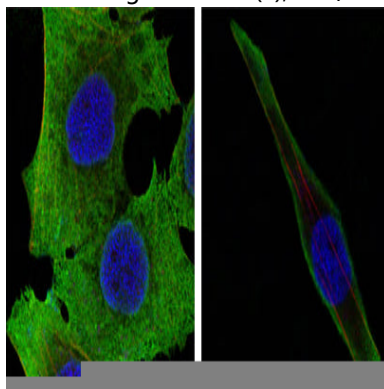
isozymes responsible for destroying free superoxide radicals in the body. The encoded isozyme is a soluble cytoplasmic protein, acting as a homodimer to convert naturally-occurring but harmful superoxide radicals to molecular oxygen and hydrogen peroxide. The other isozyme is a mitochondrial protein. Mutations in this gene have been implicated as causes of familial amyotrophic lateral sclerosis (ALS), a progressive degenerative disease of motor neurons. Rare transcript variants have been reported for this gene.

Research Area

Image Data

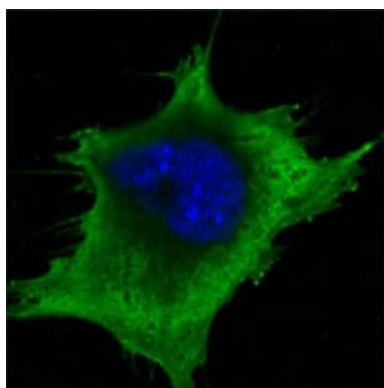


Western blot analysis using SOD1 mouse mAb against Hela (1), NIH/3T3 (2), A549 (3) and A431 (4) cell lysate.

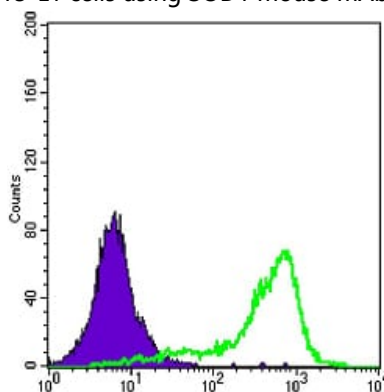


Confocal Immunofluorescence analysis of PANC-1 (left) and SKBR-3 (right) cells using SOD1 mouse mAb (green). Red: Actin filaments have been labeled with DY-554 phalloidin. Blue: DRAQ5 fluorescent DNA dye.

Product Name: SOD1 Mouse Monoclonal Antibody
Catalog #: AMM80742



Confocal Immunofluorescence analysis of 3T3-L1 cells using SOD1 mouse mAb (green). Blue: DRAQ5 fluorescent DNA dye.



Flow cytometric analysis of A431 cells using SOD1 mouse mAb (green) and negative control (purple).

Note

For research use only.