

Product Name: ISL1 Mouse Monoclonal Antibody**Catalog #: AMM80737**

For research use only.

Summary

Description	Mouse monoclonal Antibody
Host	Mouse
Application	IHC, ICC, ELISA
Reactivity	Human, Mouse, Rat, Rabbit
Conjugation	Unconjugated
Modification	Unmodified
Isotype	Mouse IgG1
Clonality	Monoclonal
Form	Liquid
Concentration	1mg/ml
Storage	Aliquot and store at -20°C (valid for 12 months). Avoid freeze/thaw cycles.
Shipping	Ice bags
Buffer	Purified antibody in PBS with 0.05% sodium azide.
Purification	Affinity Purification

Application

Dilution Ratio	IHC 1:200-1:1000, ICC 1:200-1:1000, ELISA 1:5000-1:20000
Molecular Weight	39kDa

Antigen Information

Gene Name	ISL1
Alternative Names	Isl-1; ISLET1
Gene ID	3670.0
SwissProt ID	P61371
Immunogen	Purified recombinant fragment of human ISL1 expressed in E. Coli.

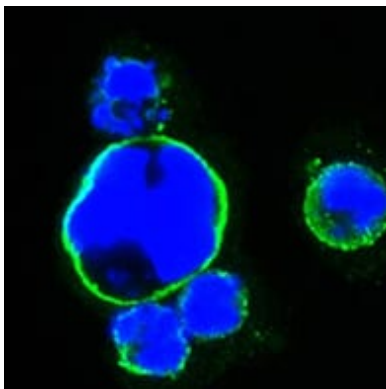
Background

ISL1 (ISL1 transcription factor, LIM/homeodomain) is a member of the LIM/homeodomain family of transcription factors. It binds to the enhancer region of the insulin gene, among others, and may play an important role in regulating insulin gene expression. It is central to the development of pancreatic cell lineages and may also be required for motor neuron generation.

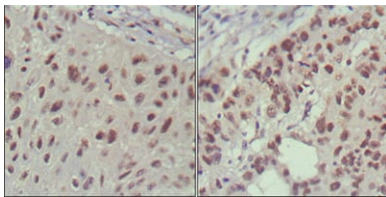
Islet-1 expression defines cardiac progenitor cell populations and is required for normal cardiac development and asymmetry. Mutations in this gene have been associated with maturity-onset diabetes of the young.

Research Area

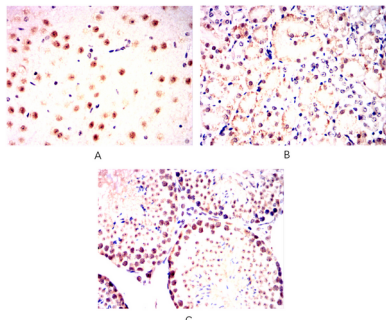
Image Data



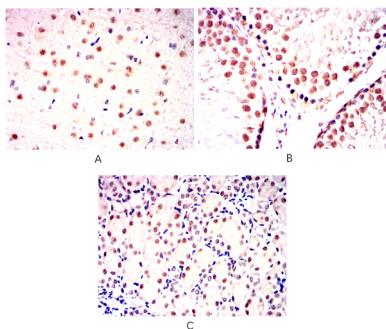
Confocal Immunofluorescence analysis of HEK293 cells trasfected with full-length ISL1-hlgGfc using ISL1 mouse mAb (green). Blue: DRAQ5 fluorescent DNA dye.



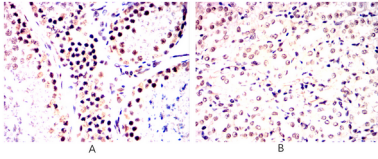
Immunohistochemical analysis of paraffin-embedded human lung cancer (left) and cervical carcinoma (right), showing nuclear localization using ISL1 mouse mAb with DAB staining.



Immunohistochemical analysis of paraffin-embedded Mouse brain(A)Mouse testis(B)Mouse kidney(C) using ISL1 mouse mAb with DAB staining.



Immunohistochemical analysis of paraffin-embedded Rat brain(A)Rat testis(B)Rat kidney(C) using ISL1 mouse mAb with DAB staining.



Immunohistochemical analysis of paraffin-embedded Rabbit testis(A)Rabbit kidney(B) using ISL1 mouse mAb with DAB staining.