

**Product Name: LPL Mouse Monoclonal Antibody****Catalog #: AMM80726**

For research use only.

**Summary**

|                      |   |
|----------------------|---|
| <b>Description</b>   | Mouse monoclonal Antibody   |
| <b>Host</b>          | Mouse   |
| <b>Application</b>   | WB,ELISA  |
| <b>Reactivity</b>    | Human   |
| <b>Conjugation</b>   | Unconjugated  |
| <b>Modification</b>  | Unmodified  |
| <b>Isotype</b>       | Mouse IgG1  |
| <b>Clonality</b>     | Monoclonal  |
| <b>Form</b>          | Liquid  |
| <b>Concentration</b> | 1mg/ml  |
| <b>Storage</b>       | Aliquot and store at -20°C (valid for 12 months). Avoid freeze/thaw cycles. |
| <b>Shipping</b>      | Ice bags  |
| <b>Buffer</b>        | PBS containing 0.03% sodium azide.  |
| <b>Purification</b>  | Affinity Purification   |

**Application**

|                         |                                      |
|-------------------------|--------------------------------------|
| <b>Dilution Ratio</b>   | WB 1:500-1:2000,ELISA 1:5000-1:20000 |
| <b>Molecular Weight</b> | 53.1kDa                              |

**Antigen Information**

|                          |  |
|--------------------------|--|
| <b>Gene Name</b>         | LPL  |
| <b>Alternative Names</b> | LIPD, HDLCQ11  |
| <b>Gene ID</b>           | 4023.0   |
| <b>SwissProt ID</b>      | P06858   |
| <b>Immunogen</b>         | Purified recombinant fragment of LPL expressed in E. Coli. |

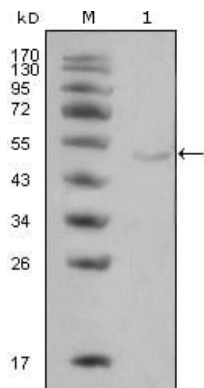
**Background**

LPL: lipoprotein lipase, also known as LIPD, HDLCQ11. Entrez Protein: NP\_000228. It is expressed in heart, muscle, and adipose tissue. LPL functions as a homodimer, and has the dual functions of triglyceride hydrolase and ligand/bridging factor for receptor-mediated lipoprotein uptake. Severe mutations that cause LPL deficiency result in type I hyperlipoproteinemia, while

less extreme mutations in LPL are linked to many disorders of lipoprotein metabolism.

## Research Area

### Image Data



Western blot analysis using LPL mouse mAb against Hela cell lysate (1).