

Product Name: Cytokeratin 8 Mouse Monoclonal Antibody
Catalog #: AMM80693

Summary

Production Name	Cytokeratin 8 Mouse Monoclonal Antibody
Description	Mouse Monoclonal Antibody
Host	Mouse
Application	WB,IHC,ICC,ELISA
Reactivity	Human

Performance

Conjugation	Unconjugated
Modification	Unmodified
Isotype	Mouse IgG1
Clonality	Monoclonal
Form	Liquid
Storage	Store at 4°C short term. Aliquot and store at -20°C long term. Avoid freeze/thaw cycles.
Buffer	Ascitic fluid containing 0.03% sodium azide.
Purification	Affinity Purification

Immunogen

Gene Name	Cytokeratin 8
Alternative Names	CK8; CYK8; K2C8; KRT8
Gene ID	3856.0
SwissProt ID	P05787.Purified recombinant fragment of human Cytokeratin (aa391-483) expressed in E. Coli.

Application

Dilution Ratio	WB:1:500-1:2000,IHC:1:200-1:1000,ICC:1:200-1:1000,ELISA:1:10000
Molecular Weight	54kDa

Product Name: Cytokeratin 8 Mouse Monoclonal Antibody
Catalog #: AMM80693

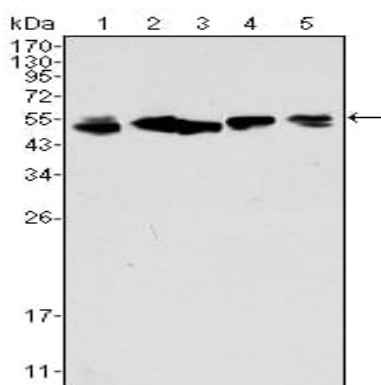


Background

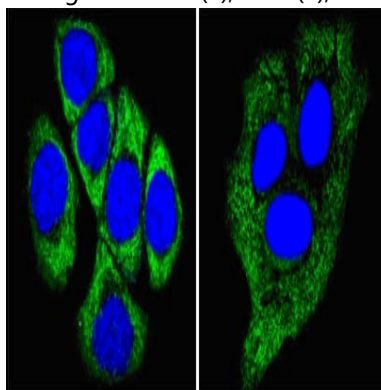
Cytokeratin 8, also known as CK8, KRT8, K8. Entrez Protein NP_002264. It is a member of the type II keratin family. Type I and type II keratins heteropolymerize to form intermediate-sized filaments in the cytoplasm of epithelial cells. It typically dimerizes with keratin 18 to form an intermediate filament in simple single-layered epithelial cells. This protein plays a role in maintaining cellular structural integrity and also functions in signal transduction and cellular differentiation. Mutations in this gene cause cryptogenic cirrhosis.

Research Area

Image Data

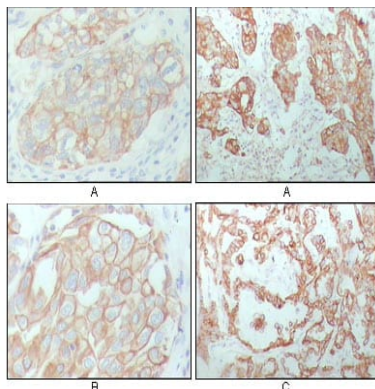


Western blot analysis using CK8 mouse mAb against A549 (1), Hela (2), MCF-7 (3), A431 (4) and HepG2 (5) cell lysate.

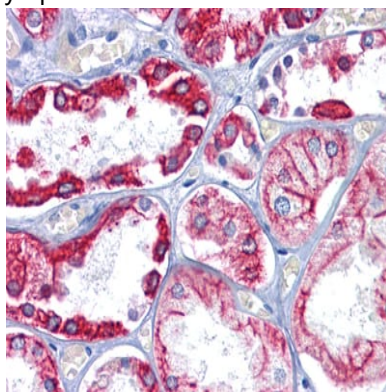


Confocal Immunofluorescence analysis of methanol-fixed ECA109 cells (left) and HepG2 cells (right) using CK8 mouse mAb (green), showing cytoplasmic localization. Blue: DRAQ5 fluorescent DNA dye.

Product Name: Cytokeratin 8 Mouse Monoclonal Antibody
Catalog #: AMM80693



Immunohistochemical analysis of paraffin-embedded human breast carcinoma (A), lung cancer (B) and ovarian cancer tissue (C), showing membrane and cytoplasmic localization with DAB staining using CK8 mouse mAb.



Immunohistochemical analysis of paraffin-embedded human Kidney tissues using CK8 mouse mAb

Note

For research use only.