

Product Name: LPP Mouse Monoclonal Antibody
Catalog #: AMM80625



Summary

Production Name	LPP Mouse Monoclonal Antibody
Description	Mouse Monoclonal Antibody
Host	Mouse
Application	WB,IHC,ICC,ELISA
Reactivity	Human,Mouse,Monkey,Hamster

Performance

Conjugation	Unconjugated
Modification	Unmodified
Isotype	Mouse IgG1
Clonality	Monoclonal
Form	Liquid
Storage	Store at 4°C short term. Aliquot and store at -20°C long term. Avoid freeze/thaw cycles.
Buffer	Purified antibody in PBS with 0.05% sodium azide.
Purification	Affinity Purification

Immunogen

Gene Name	LPP
Alternative Names	LPP
Gene ID	4026.0
SwissProt ID	Q93052.Purified recombinant fragment of human LPP expressed in E. Coli.

Application

Dilution Ratio	WB:1:500-1:2000,IHC:1:200-1:1000,ICC:1:200-1:1000,ELISA:1:10000
Molecular Weight	66kDa

Background

LIM domain containing preferred translocation partner in lipoma. The Zyxin family of proteins contains five members,

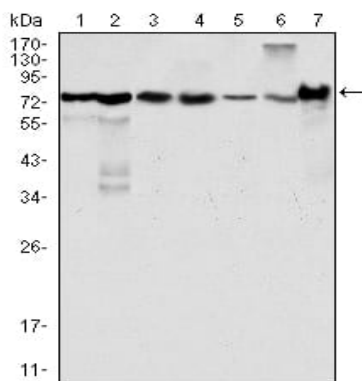
Product Name: LPP Mouse Monoclonal Antibody
Catalog #: AMM80625



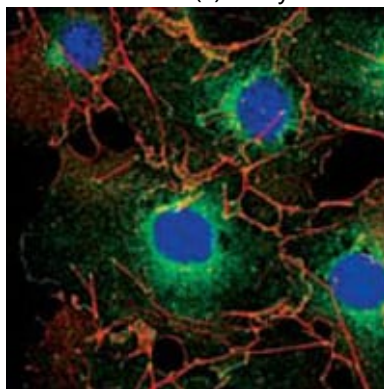
Ajuba, LIMD1, LPP, TRIP6 and Zyxin. LPP (LIM-containing lipoma-preferred partner), a LIM domain-containing scaffolding protein contains three LIM domains at its carboxy terminus, which are preceded by a proline-rich pre-LIM region containing a number of protein interaction domains. LPP, an 80 kDa protein, localizes to sites of cell adhesion, such as focal adhesions and cell-cell contacts, and shuttles to the nucleus where it has transcriptional activation capacity. The human LPP gene maps to chromosomal location 3q28, and preferentially translocates to the HMGIC gene in a subclass of human benign mesenchymal tumors known as lipomas.

Research Area

Image Data

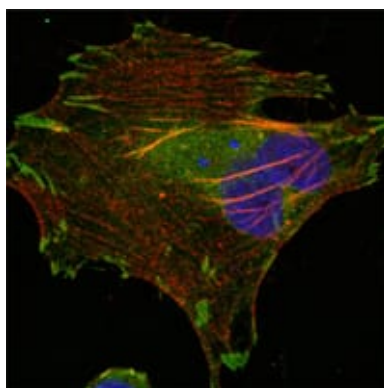


Western blot analysis using LPP mouse mAb against Hela (1), NIH/3T3 (2), COS (3), Caki (4), MCF-7 (5), HepG2 (6) and SMMC-7721 (7) cell lysate.

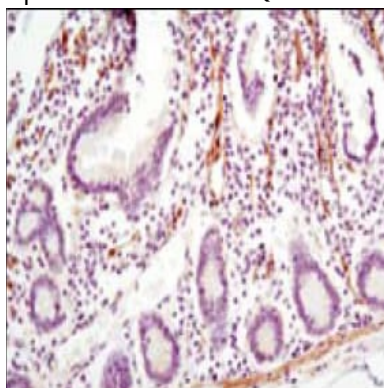


Confocal Immunofluorescence analysis of COS cells using LPP mouse mAb (green). Red: Actin filaments have been labeled using DY-554 phalloidin. Blue: DRAQ5 fluorescent DNA dye.

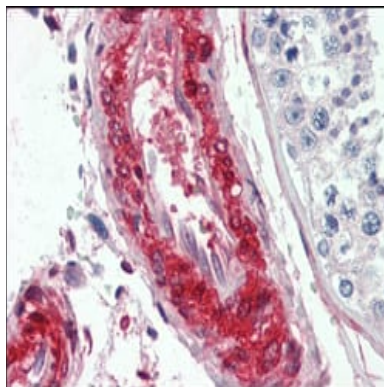
Product Name: LPP Mouse Monoclonal Antibody
Catalog #: AMM80625



Confocal Immunofluorescence analysis of HeLa cells using LPP mouse mAb (green). Red: Actin filaments have been labeled using DY-554 phalloidin. Blue: DRAQ5 fluorescent DNA dye.



Immunohistochemical analysis of paraffin-embedded human small intestine using LPP mouse mAb with DAB staining.



Immunohistochemical analysis of paraffin-embedded human vessels tissues using LPP mouse mAb.

Note

For research use only.