

**Product Name: S100B Mouse Monoclonal Antibody****Catalog #: AMM80609**

For research use only.

**Summary**

|                      |   |
|----------------------|---|
| <b>Description</b>   | Mouse monoclonal Antibody   |
| <b>Host</b>          | Mouse   |
| <b>Application</b>   | IHC,ELISA   |
| <b>Reactivity</b>    | Human   |
| <b>Conjugation</b>   | Unconjugated  |
| <b>Modification</b>  | Unmodified  |
| <b>Isotype</b>       | Mouse IgG1  |
| <b>Clonality</b>     | Monoclonal  |
| <b>Form</b>          | Liquid  |
| <b>Concentration</b> | 1mg/ml  |
| <b>Storage</b>       | Aliquot and store at -20°C (valid for 12 months). Avoid freeze/thaw cycles. |
| <b>Shipping</b>      | Ice bags  |
| <b>Buffer</b>        | Purified antibody in PBS with 0.05% sodium azide.                           |
| <b>Purification</b>  | Affinity Purification   |

**Application**

|                         |                                       |
|-------------------------|---------------------------------------|
| <b>Dilution Ratio</b>   | IHC 1:200-1:1000,ELISA 1:5000-1:20000 |
| <b>Molecular Weight</b> | /                                     |

**Antigen Information**

|                          |  |
|--------------------------|--|
| <b>Gene Name</b>         | S100B  |
| <b>Alternative Names</b> | NEF; S100; S100beta  |
| <b>Gene ID</b>           | 6285.0   |
| <b>SwissProt ID</b>      | P04271   |
| <b>Immunogen</b>         | Purified recombinant fragment of S100B expressed in E. Coli. |

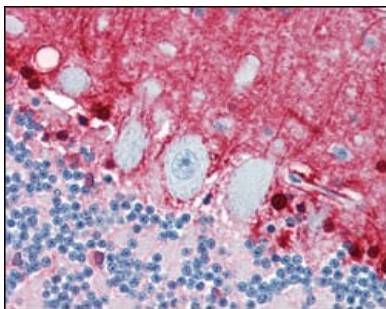
**Background**

S100B (S100 calcium binding protein B) is a member of the S100 family of proteins containing 2 EF-hand calcium binding motifs. S100 proteins are localized in the cytoplasm and/or nucleus of a wide range of cells, and involved in the regulation of a number of cellular processes such as cell cycle progression and differentiation. S-100 proteins and parvalbumin proteins are

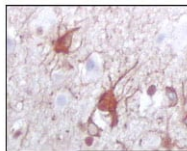
each expressed in neural tissues. In addition, S100B are present in a variety of other tissues, and calbindin is present in intestine and kidney. Parvalbumin B is found in many tumor tissues as well as in the organ of Corti. Calbindin, S-100 proteins and parvalbumins have all been detected in leydig cells and the testis. These proteins are thought to play a role in hormone production and spermatogenesis. Chromosomal rearrangements and altered expression of this gene have been implicated in several neurological, neoplastic, and other types of diseases, including Alzheimer's disease, Down's syndrome, epilepsy, amyotrophic lateral sclerosis, melanoma, and type I diabetes.

## Research Area

### Image Data



Immunohistochemical analysis of paraffin-embedded human brain, cerebellum using S100B mouse mAb with DAB staining.



Immunohistochemical analysis of paraffin-embedded human brain (A) and human thymus tissues (B), showing cytoplasmic localization using S100B mouse mAb with DAB staining.

