

Product Name: RSK1 Mouse Monoclonal Antibody**Catalog #: AMM80594**

For research use only.

Summary

Description	Mouse monoclonal Antibody
Host	Mouse
Application	IHC,ELISA
Reactivity	Human
Conjugation	Unconjugated
Modification	Unmodified
Isotype	Mouse IgG2b
Clonality	Monoclonal
Form	Liquid
Concentration	1mg/ml
Storage	Aliquot and store at -20°C (valid for 12 months). Avoid freeze/thaw cycles.
Shipping	Ice bags
Buffer	PBS containing 0.03% sodium azide.
Purification	Affinity Purification

Application

Dilution Ratio	IHC 1:200-1:1000,ELISA 1:5000-1:20000
Molecular Weight	/

Antigen Information

Gene Name	RSK1
Alternative Names	RSK; HU-1; RSK1; MAPKAPK1A; RPS6KA1
Gene ID	6195.0
SwissProt ID	Q15418
Immunogen	Purified recombinant fragment of human RSK1 expressed in E. Coli.

Background

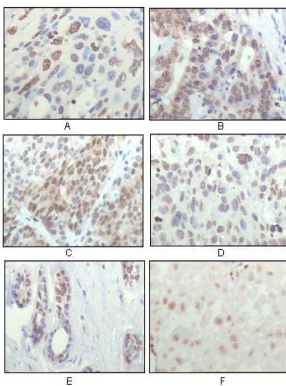
Rsk1 is a member of a family of 90kDa ribosomal protein S6 kinases, which includes Rsk1, Rsk2 and Rsk3. These are broadly expressed serine / threonine protein kinases activated in response to mitogenic stimuli, including extracellular signal regulated protein kinases Erk1 and Erk2. Rsk1 is activated by MAPK in vitro and in vivo via phosphorylation. Active Rsks appear to play a

major role in transcriptional regulation by translocating to the nucleus and phosphorylating c-Fos and CREB. RSK proteins possess two separate kinase domains, the C terminal kinase domain and the N terminal kinase domain, separated by a linker region containing a hydrophobic motif. RSK is activated by many stimuli including growth factors, phorbol esters, cAMP, heat shock, and irradiation.

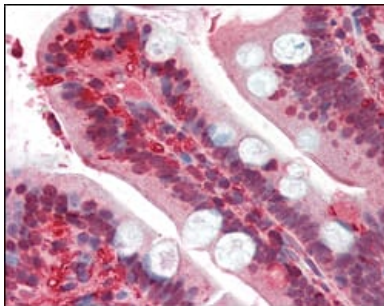
Research Area

mTOR signaling pathway

Image Data



Immunohistochemical analysis of paraffin-embedded human esophageal squamous cell carcinoma (A), colon adenocarcinoma (B), liver carcinoma (C), skin carcinoma (D), breast ductal tumor (E) and brain tumor (F), showing nuclear localization using RSK1 mouse mAb with DAB staining.



Immunohistochemical analysis of paraffin-embedded human small intestine tissues using RSK1 mouse mAb.