

**Product Name: PTK6 Mouse Monoclonal Antibody**  
**Catalog #: AMM80582**



## Summary

<b>Production Name</b>	PTK6 Mouse Monoclonal Antibody
<b>Description</b>	Mouse Monoclonal Antibody
<b>Host</b>	Mouse
<b>Application</b>	WB,ELISA
<b>Reactivity</b>	Human

## Performance

<b>Conjugation</b>	Unconjugated
<b>Modification</b>	Unmodified
<b>Isotype</b>	Mouse IgG2b
<b>Clonality</b>	Monoclonal
<b>Form</b>	Liquid
<b>Storage</b>	Store at 4°C short term. Aliquot and store at -20°C long term. Avoid freeze/thaw cycles.
<b>Buffer</b>	Purified antibody in PBS with 0.05% sodium azide.
<b>Purification</b>	Affinity Purification

## Immunogen

<b>Gene Name</b>	PTK6
<b>Alternative Names</b>	BRK; FLJ42088
<b>Gene ID</b>	5753.0
<b>SwissProt ID</b>	Q13882. Purified recombinant fragment of human PTK6 expressed in E. Coli.

## Application

<b>Dilution Ratio</b>	WB:1:500-1:2000,ELISA:1:10000
<b>Molecular Weight</b>	52kDa

## Background

PTK6 (protein tyrosine kinase 6, BRK or FLJ42088), with 451-amino acid protein (about 52kDa), encodes a cytoplasmic nonreceptor protein kinase which may function as an intracellular signal transducer in epithelial tissues. Its presence in the

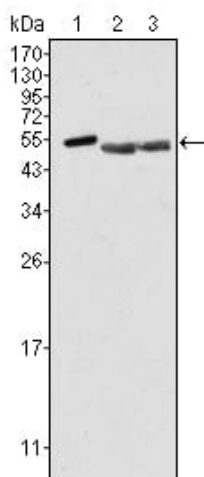
**Product Name: PTK6 Mouse Monoclonal Antibody**  
**Catalog #: AMM80582**



nucleus appears to be linked to suppression of tumor progression. The encoded protein has been shown to undergo autophosphorylation. Very high level in colon and high levels in small intestine and prostate, and low levels in some fetal tissues. And Expressed at low level in some breast tumors, but not in normal breast. Also found in melanocytes, but not expressed in heart, brain, placenta, lung, liver, skeletal muscle, kidney and pancreas. Overexpression of this gene in mammary epithelial cells leads to sensitization of the cells to epidermal growth factor and results in a partially transformed phenotype.

## Research Area

## Image Data



Western blot analysis using PTK6 mouse mAb against HeLa (1), A549 (2) and MCF-7 (3) cell lysate.

## Note

For research use only.