

Product Name: 4E-BP1 Mouse Monoclonal Antibody**Catalog #: AMM80569**

For research use only.

Summary

Description	Mouse monoclonal Antibody
Host	Mouse
Application	IHC,ELISA
Reactivity	Human
Conjugation	Unconjugated
Modification	Unmodified
Isotype	Mouse IgG1
Clonality	Monoclonal
Form	Liquid
Concentration	1mg/ml
Storage	Aliquot and store at -20°C (valid for 12 months). Avoid freeze/thaw cycles.
Shipping	Ice bags
Buffer	Purified antibody in PBS with 0.05% sodium azide.
Purification	Affinity Purification

Application

Dilution Ratio	IHC 1:200-1:1000,ELISA 1:5000-1:20000
Molecular Weight	/

Antigen Information

Gene Name	4E-BP1
Alternative Names	BP-1; 4EBP1; 4E-BP1; PHAS-I; MGC4316; EIF4EBP1
Gene ID	1978.0
SwissProt ID	Q13541
Immunogen	Purified recombinant fragment of 4EBP1 expressed in E. Coli.

Background

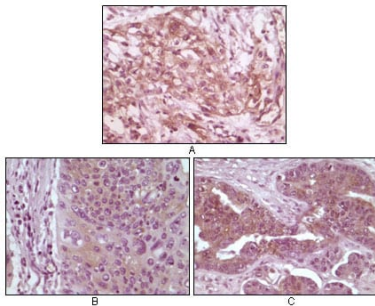
4E-BP1(eukaryotic translation Initiation Factor 4E Binding Protein 1),also called ELF4EBP1/BP-1/PHAS-I ,which is located on chromosome 8p12, with 118-amino acid protein (about 13kDa). Binding of eIF4EBP1 to eIF4E is reversible and is dependent on the phosphorylation status of eIF4EBP1. Non phosphorylated eIF4EBP1 will bind strongly to eIF4E while(24kDa), the

phosphorylated form will not. Akt, TOR, MAP kinase, S6 kinase, and Cdc2 are known kinases capable of inactivating eIF4EBP1 binding to eIF4E by phosphorylating either threonines 35, 45, 69 or serine 64. Although, not all phosphorylation events equally block the eIF4EBP1-eIF4E interaction.

Research Area

PI3K-Akt signaling pathway, mTOR signaling pathway

Image Data



Immunohistochemical analysis of paraffin-embedded human pancreas carcinoma (A), esophagus carcinoma tissue (B) and ovary tumor tissue, showing cytoplasmic and membrane localization using 4E-BP1 mouse mAb with DAB staining.