

Product Name: CK1 Mouse Monoclonal Antibody
Catalog #: AMM80556



Summary

Production Name	CK1 Mouse Monoclonal Antibody
Description	Mouse Monoclonal Antibody
Host	Mouse
Application	IHC,ELISA
Reactivity	Human

Performance

Conjugation	Unconjugated
Modification	Unmodified
Isotype	Mouse IgG1
Clonality	Monoclonal
Form	Liquid
Storage	Store at 4°C short term. Aliquot and store at -20°C long term. Avoid freeze/thaw cycles.
Buffer	PBS containing 0.03% sodium azide.
Purification	Affinity Purification

Immunogen

Gene Name	CK1
Alternative Names	K1; CK1; EHK; EHK1; EPPK; KRT1A; NEPPK
Gene ID	3848.0
SwissProt ID	P04264. Purified recombinant fragment of CK1 expressed in E. Coli.

Application

Dilution Ratio	IHC:1:200-1:1000,ELISA:1:10000
Molecular Weight	/

Background

CK1 (also designated Cytokeratin 1 or KRT1),with 644-amino acid protein (about 70kDa), is a member of the keratin family. Cytokeratins play a critical role in differentiation and tissue specialization, and they function to maintain the overall

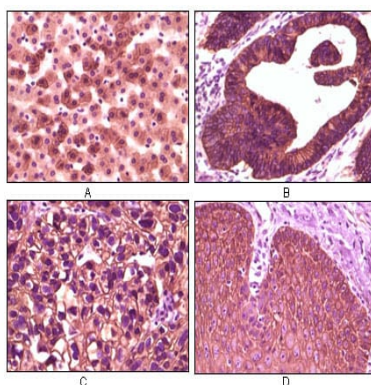
Product Name: CK1 Mouse Monoclonal Antibody
Catalog #: AMM80556



structural integrity of epithelial cells. CK1 consist of basic or neutral proteins which are arranged in pairs of heterotypic keratin chains coexpressed during differentiation of simple and stratified epithelial tissues. CK1 is specifically expressed in the spinous and granular layers of the epidermis with family member KRT10 and mutations in these genes have been associated with bullous congenital ichthyosiform erythroderma.

Research Area

Image Data



Immunohistochemical analysis of paraffin-embedded human liver tissue (A), colon carcinoma (B), lung carcinoma (C) and esophagus tissue (D), showing membrane localization using CK1 mouse mAb with DAB staining.

Note

For research use only.