

**Product Name: SNCG (breast cancer-specific protein 1)**  
**Mouse Monoclonal Antibody**  
**Catalog #: AMM80552**

---



## Summary

<b>Production Name</b>	SNCG (breast cancer-specific protein 1) Mouse Monoclonal Antibody
<b>Description</b>	Mouse Monoclonal Antibody
<b>Host</b>	Mouse
<b>Application</b>	IHC,ELISA
<b>Reactivity</b>	Human

## Performance

<b>Conjugation</b>	Unconjugated
<b>Modification</b>	Unmodified
<b>Isotype</b>	Mouse IgG1
<b>Clonality</b>	Monoclonal
<b>Form</b>	Liquid
<b>Storage</b>	Store at 4°C short term. Aliquot and store at -20°C long term. Avoid freeze/thaw cycles.
<b>Buffer</b>	Purified antibody in PBS with 0.05% sodium azide.
<b>Purification</b>	Affinity Purification

## Immunogen

<b>Gene Name</b>	SNCG (breast cancer-specific protein 1)
<b>Alternative Names</b>	SR; BCSG1
<b>Gene ID</b>	6623.0
<b>SwissProt ID</b>	O76070. Purified recombinant fragment of SNCG expressed in E. Coli.

## Application

<b>Dilution Ratio</b>	IHC:1:200-1:1000,ELISA:1:10000
<b>Molecular Weight</b>	/

## Background

SNCG(also designated gamma-synuclein or breast cancer-specific protein 1),with 127-amino acid protein(about 14kDa),

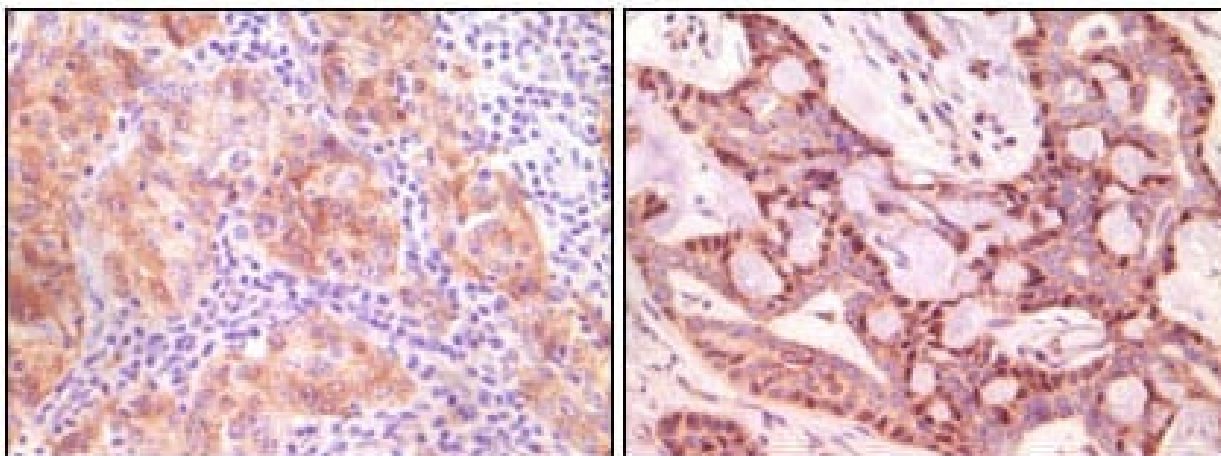
**Product Name: SNCG (breast cancer-specific protein 1)**  
**Mouse Monoclonal Antibody**  
**Catalog #: AMM80552**



belongs to the synuclein family, which also includes alpha- and beta- synuclein. Three synucleins are located in the neuronal cytosol and enriched in presynaptic terminals, while SNCG is also expressed in many other non-neuronal tissues. SNCG is abnormally expressed in a high percentage of tumor tissues of diversified cancer types, including liver, esophagus, colon, gastric, lung, prostate, cervical, and breast cancer, but rarely expressed in tumor-matched nonneoplastic adjacent tissues. High levels of SNCG have been identified in advanced breast carcinomas suggesting a correlation between overexpression of SNCG and breast tumor development.

## Research Area

## Image Data



Immunohistochemical analysis of paraffin-embedded human ovary carcinoma (left) and breast carcinoma (right), showing cytoplasmic(ovary carcinoma) localization, cytoplasmic and nuclear (breast carcinoma) localization using SNCG mouse mAb with DAB staining.

## Note

For research use only.