

Product Name: SNCA Mouse Monoclonal Antibody
Catalog #: AMM80548



Summary

Production Name	SNCA Mouse Monoclonal Antibody
Description	Mouse Monoclonal Antibody
Host	Mouse
Application	IHC,ELISA
Reactivity	Human

Performance

Conjugation	Unconjugated
Modification	Unmodified
Isotype	Mouse IgG1
Clonality	Monoclonal
Form	Liquid
Storage	Store at 4°C short term. Aliquot and store at -20°C long term. Avoid freeze/thaw cycles.
Buffer	Purified antibody in PBS with 0.05% sodium azide.
Purification	Affinity Purification

Immunogen

Gene Name	SNCA
Alternative Names	PD1; NACP; PARK1; PARK4; MGC110988
Gene ID	6622.0
SwissProt ID	P37840. Purified recombinant fragment of SNCA expressed in E. Coli.

Application

Dilution Ratio	IHC:1:200-1:1000,ELISA:1:10000
Molecular Weight	/

Background

Alpha-synuclein (SNCA), with 140-amino acid protein (about 15kDa), belongs to the synuclein family, which also includes beta- and gamma-synuclein. SNCA is a soluble protein, expressed principally in the brain but also expressed in low

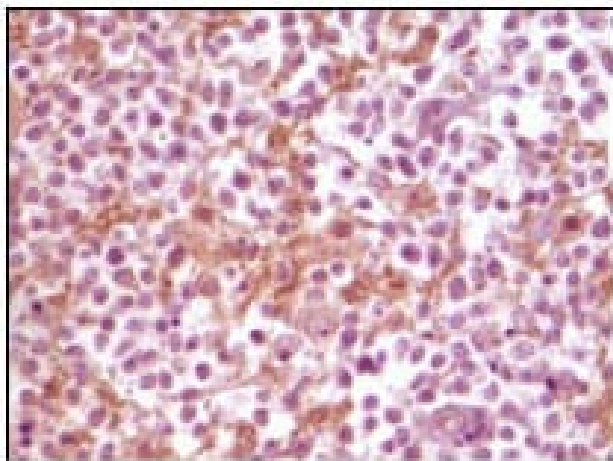
Product Name: SNCA Mouse Monoclonal Antibody
Catalog #: AMM80548



concentrations in all tissues examined (except liver). SNCA is implicated in the regulation of dopamine release and transport. The triplication of the SNCA can cause Parkinson disease (PD) and diffuse Lewy body disease within the same kindred. SNCA peptides are a major component of amyloid plaques in the brains of patients with Alzheimer's disease. Immunohistochemistry for SNCA has become the histological technique of choice for the diagnosis for Parkinson's disease, Dementia with Lewy bodies and Multiple System Atrophy.

Research Area

Image Data



Immunohistochemical analysis of paraffin-embedded human glioma tissue, showing membrane localization using SNCA mouse mAb with DAB staining.

Note

For research use only.