

Product Name: EphB6 Mouse Monoclonal Antibody**Catalog #: AMM80538**

For research use only.

Summary

Description	Mouse monoclonal Antibody
Host	Mouse
Application	WB,IHC,ELISA
Reactivity	Human
Conjugation	Unconjugated
Modification	Unmodified
Isotype	Mouse IgG1
Clonality	Monoclonal
Form	Liquid
Concentration	1mg/ml
Storage	Aliquot and store at -20°C (valid for 12 months). Avoid freeze/thaw cycles.
Shipping	Ice bags
Buffer	Purified antibody in PBS with 0.05% sodium azide
Purification	Affinity Purification

Application

Dilution Ratio	WB 1:500-1:2000,IHC 1:200-1:1000,ELISA 1:5000-1:20000
Molecular Weight	119kDa

Antigen Information

Gene Name	EphB6
Alternative Names	HEP; MGC129910; MGC129911
Gene ID	2051.0
SwissProt ID	O15197
Immunogen	Purified recombinant fragment of EphB6 expressed in E. Coli.

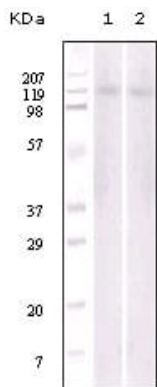
Background

EPH receptor B6 (EphB6), with 1006-amino acid protein(~ 110 kDa), belongs to the ephrin receptor subfamily of the protein-tyrosine kinase family. Eph receptors and ephrin ligands are membrane-bound cell-cell communication molecules with well-defined functions in development. EphB6 is expressed both in a variety of embryonic and adult tissues. EphB6 is a unique

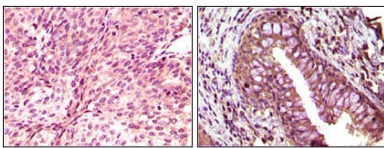
member in the Eph family of receptor tyrosine kinases in that its kinase domain contains several alterations in conserved amino acids and is catalytically inactive. EphB6 can both positively and negatively regulate cell adhesion and migration and tyrosine phosphorylation of the receptor by an Src family kinase acts as the molecular switch for the functional transition.

Research Area

Image Data



Western blot analysis of Jurkat (1) and NIH/3T3 (2) cell lysate using EphB6 mouse mAb.



Immunohistochemical analysis of paraffin-embedded human bladder carcinoma (left) and return carcinoma (right) tissue, showing cytoplasmic localization using EphB6 mouse mAb with DAB staining.