

Product Name: ER-alpha Mouse Monoclonal Antibody**Catalog #: AMM80529**

For research use only.

Summary

Description	Mouse monoclonal Antibody
Host	Mouse
Application	WB,IHC,ELISA
Reactivity	Human
Conjugation	Unconjugated
Modification	Unmodified
Isotype	Mouse IgG1
Clonality	Monoclonal
Form	Liquid
Concentration	1mg/ml
Storage	Aliquot and store at -20°C (valid for 12 months). Avoid freeze/thaw cycles.
Shipping	Ice bags
Buffer	Purified antibody in PBS with 0.05% sodium azide
Purification	Affinity Purification

Application

Dilution Ratio	WB 1:500-1:2000,IHC 1:200-1:1000,ELISA 1:5000-1:20000
Molecular Weight	66kDa

Antigen Information

Gene Name	ER-alpha
Alternative Names	ER; ESR1; Era; ESRA
Gene ID	2099.0
SwissProt ID	P03372
Immunogen	Purified recombinant fragment of human ER-alpha (410-592aa) expressed in E. Coli.

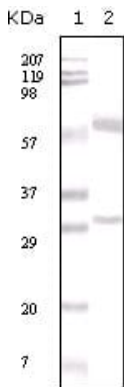
Background

The estrogen receptor (ER) is a ligand-activated transcription factor composed of several domains important for hormone binding, DNA binding, and activation of transcription. Alternative splicing results in several ER mRNA transcripts, which differ primarily in their 5-prime untranslated regions. Two isoforms of the human ER, ERA and ER-beta, occur, each with distinct tissue

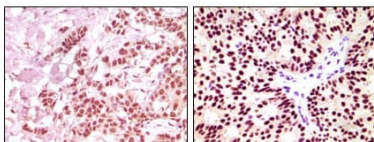
and cell patterns of expression. Pelletier and El-Alfy (2000) studied the immunocytochemical localization of ESRA and ESRB in human reproductive tissues. In the ovary, ERB immunoreactivity was found in nuclei of granulosa cells of growing follicles at all stages from primary to mature follicles, interstitial gland, and germinal epithelium cells. Nuclear staining for ERA occurred in thecal, interstitial gland, and germinal epithelium cells. In the uterus, strong ERA immunoreactivity was detected in nuclei of epithelial, stromal, and muscle cells.

Research Area

Image Data



Western blot analysis using ER-alpha mouse mAb against human breast carcinoma tissue lysate.



Immunohistochemical analysis of paraffin-embedded human breast carcinoma, using ER-alpha mouse mAb showing nuclear expression with DAB staining.