

---

**Product Name: KSHV ORF26 Mouse Monoclonal Antibody****Catalog #: AMM80523**

For research use only.

**Summary**

<b>Description</b>	Mouse monoclonal Antibody
<b>Host</b>	Mouse
<b>Application</b>	WB,ELISA
<b>Reactivity</b>	Human
<b>Conjugation</b>	Unconjugated
<b>Modification</b>	Unmodified
<b>Isotype</b>	Mouse IgG1
<b>Clonality</b>	Monoclonal
<b>Form</b>	Liquid
<b>Concentration</b>	1mg/ml
<b>Storage</b>	Aliquot and store at -20°C (valid for 12 months). Avoid freeze/thaw cycles.
<b>Shipping</b>	Ice bags
<b>Buffer</b>	Purified antibody in PBS with 0.05% sodium azide.
<b>Purification</b>	Affinity Purification

**Application**

<b>Dilution Ratio</b>	WB 1:500-1:2000,ELISA 1:5000-1:20000
<b>Molecular Weight</b>	32kDa

**Antigen Information**

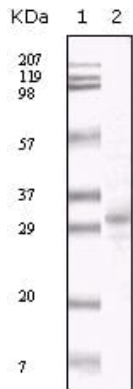
<b>Gene Name</b>	KSHV ORF26
<b>Alternative Names</b>	ORF26
<b>Gene ID</b>	4961509.0
<b>SwissProt ID</b>	
<b>Immunogen</b>	Purified recombinant fragment of KSHV ORF26 expressed in E. Coli.

**Background**

Kaposi's sarcoma-associated herpesvirus (KSHV) belongs to the gamma-(2)-herpesvirus subfamily and has been closely linked to the Kaposi

## Research Area

### Image Data



Western blot analysis using KSHV ORF26 mouse mAb against TPA induced BCBL-1 cell lysate.