

---

**Product Name: CD14 Mouse Monoclonal Antibody****Catalog #: AMM80511**

For research use only.

**Summary**

<b>Description</b>	Mouse monoclonal Antibody
<b>Host</b>	Mouse
<b>Application</b>	IHC,ELISA,FC
<b>Reactivity</b>	Human
<b>Conjugation</b>	Unconjugated
<b>Modification</b>	Unmodified
<b>Isotype</b>	Mouse IgG1
<b>Clonality</b>	Monoclonal
<b>Form</b>	Liquid
<b>Concentration</b>	1mg/ml
<b>Storage</b>	Aliquot and store at -20°C (valid for 12 months). Avoid freeze/thaw cycles.
<b>Shipping</b>	Ice bags
<b>Buffer</b>	Purified antibody in PBS with 0.05% sodium azide.
<b>Purification</b>	Affinity Purification

**Application**

<b>Dilution Ratio</b>	IHC 1:200-1:1000,ELISA 1:5000-1:20000,FC 1:200-1:400
<b>Molecular Weight</b>	/

**Antigen Information**

<b>Gene Name</b>	CD14
<b>Alternative Names</b>	CD14
<b>Gene ID</b>	929.0
<b>SwissProt ID</b>	P08571
<b>Immunogen</b>	Purified recombinant fragment of human CD14 expressed in E. Coli.

**Background**

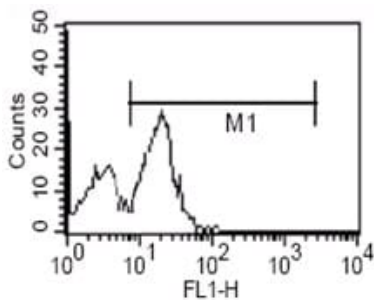
CD14 antigen is a GPI-linked glycoprotein with a molecular weight of 55kD. The CD14 antigen is expressed on cells of the myelomonocytic lineage including monocytes, macrophages and Langerhans cells. Low expression is observed on neutrophils and on human B cells. CD14 antigen is a receptor for bacterial lipopolysaccharide (LPS, endotoxin) and the lipopolysaccharide

binding protein (LBP). LBP and CD14 antigen serves two physiological roles. These proteins act as opsonin and opsonic receptor, respectively, to promote the phagocytic uptake of bacteria or LPS-coated particles by macrophages.

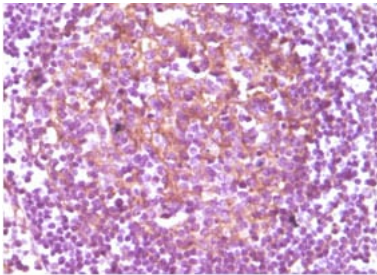
## Research Area

MAPK signaling pathway

## Image Data



Flow cytometric analysis of human PBMC using CD14 mouse mAb.



Immunohistochemical analysis of paraffin-embedded human lymphnode, showing membrane localization using CD14 mouse mAb with DAB staining.