

**Product Name: KSHV K8a Mouse Monoclonal Antibody**  
**Catalog #: AMM80506**



## Summary

<b>Production Name</b>	KSHV K8a Mouse Monoclonal Antibody
<b>Description</b>	Mouse Monoclonal Antibody
<b>Host</b>	Mouse
<b>Application</b>	ICC,ELISA
<b>Reactivity</b>	Other

## Performance

<b>Conjugation</b>	Unconjugated
<b>Modification</b>	Unmodified
<b>Isotype</b>	Mouse IgG2a
<b>Clonality</b>	Monoclonal
<b>Form</b>	Liquid
<b>Storage</b>	Store at 4°C short term. Aliquot and store at -20°C long term. Avoid freeze/thaw cycles.
<b>Buffer</b>	Ascitic fluid containing 0.03% sodium azide.
<b>Purification</b>	Affinity Purification

## Immunogen

<b>Gene Name</b>	KSHV K8a
<b>Alternative Names</b>	K8
<b>Gene ID</b>	4961462.0
<b>SwissProt ID</b>	.Purified recombinant fragment of KSHV K8α expressed in E. Coli.

## Application

<b>Dilution Ratio</b>	ICC:1:25-1:50,ELISA:1:10000
<b>Molecular Weight</b>	/

## Background

Kaposi's sarcoma-associated herpesvirus (KSHV) belongs to the gamma-(2)-herpesvirus subfamily and has been closely

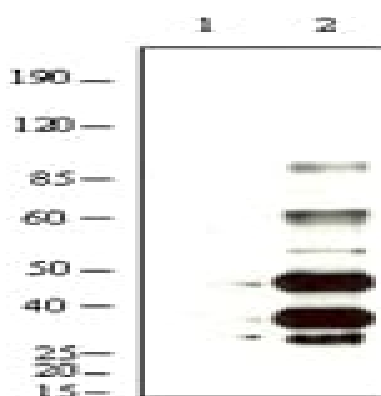
**Product Name: KSHV K8a Mouse Monoclonal Antibody**  
**Catalog #: AMM80506**



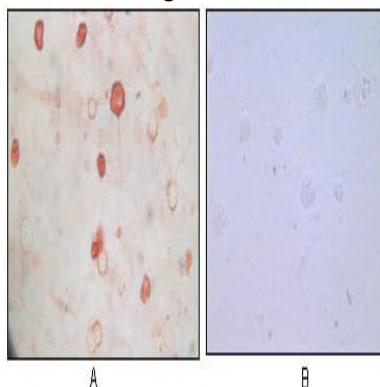
linked to the Kaposi

## Research Area

## Image Data



Western blot analysis using KSHV K8 mouse mAb against BCBL-1 (1) and TPA induced BCBL-1 (2) cell lysate.



Immunocytochemistry analysis of TPA induced BCBL-1 cells (A) and uninduced BCBL-1 cells (B) using KSHV K8 mouse mAb with AEC staining.

## Note

For research use only.