

**Product Name: BCL-10 Mouse Monoclonal Antibody**  
**Catalog #: AMM80502**



## Summary

<b>Production Name</b>	BCL-10 Mouse Monoclonal Antibody
<b>Description</b>	Mouse Monoclonal Antibody
<b>Host</b>	Mouse
<b>Application</b>	WB,IHC,ICC,FC,ELISA
<b>Reactivity</b>	Human,Mouse

## Performance

<b>Conjugation</b>	Unconjugated
<b>Modification</b>	Unmodified
<b>Isotype</b>	Mouse IgG1
<b>Clonality</b>	Monoclonal
<b>Form</b>	Liquid
<b>Storage</b>	Store at 4°C short term. Aliquot and store at -20°C long term. Avoid freeze/thaw cycles.
<b>Buffer</b>	Ascitic fluid containing 0.03% sodium azide.
<b>Purification</b>	Affinity Purification

## Immunogen

<b>Gene Name</b>	BCL-10
<b>Alternative Names</b>	CLAP; Me10; CIPER; c-E10; CARMEN
<b>Gene ID</b>	8915.0
<b>SwissProt ID</b>	O95999.Purified recombinant fragment of human BCL-10 expressed in E. Coli.

## Application

<b>Dilution Ratio</b>	WB:1:500-1:2000,IHC:1:200-1:1000,ICC:1:200-1:1000,FC:1:200-1:400,ELISA:1:10000
<b>Molecular Weight</b>	26kDa

## Background

Bcl-10 (B-cell CLL/lymphoma 10), also known as CLAP, Me10, CIPER, c-E10, CARMEN. Entrez Protein NP\_003912. It is a

**Product Name: BCL-10 Mouse Monoclonal Antibody**  
**Catalog #: AMM80502**

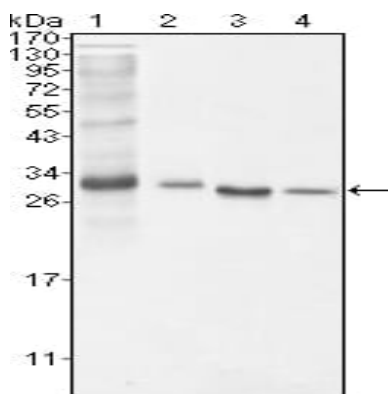


protein containing a caspase recruitment domain (CARD). It plays an important role in apoptosis and activating NF-kappaB. The research suggested that it interacted with other CARD domain containing proteins including CARD9, 10, 11 and 14, which were thought to function as upstream regulators in NF-kappaB signaling. Bcl-10 is found to form a complex with MALT1 which encoded by another gene known to be translocated in MALT lymphoma. MALT1 and Bcl-10 are thought to synergize in the activation of NF-kappaB, and the deregulation of either of them may contribute to the same pathogenetic process that leads to the malignancy.

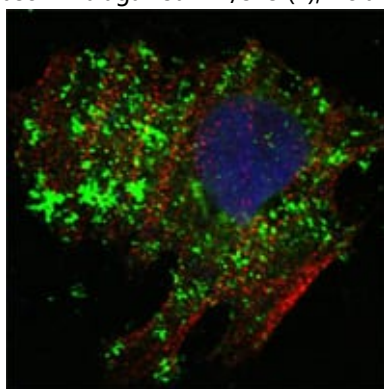
## Research Area

Apoptosis

## Image Data

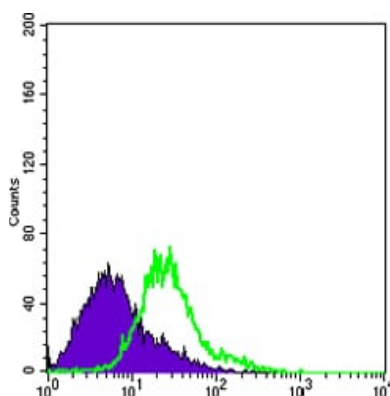


Western blot analysis using BCL10 mouse mAb against NIH/3T3 (1), Hela (2), MCF-7 (3) and Jurkat (4) cell lysate.

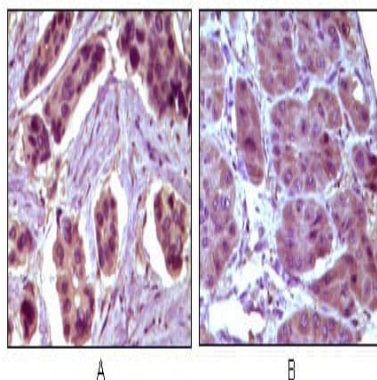


Confocal Immunofluorescence analysis of Hela cells using BCL10 mouse mAb (green). Red: Actin filaments have been labeled with Alexa Fluor-555 phalloidin. Blue: DRAQ5 fluorescent DNA dye.

**Product Name: BCL-10 Mouse Monoclonal Antibody**  
**Catalog #: AMM80502**



Flow cytometric analysis of Hela cells using BCL10 mouse mAb (green) and negative control (purple).



Immunohistochemical analysis of paraffin-embedded human breast carcinoma (A) and liver carcinoma (B), showing cytoplasmic localization using BCL10 mouse mAb with DAB staining.

## **Note**

For research use only.