

---

**Product Name:** human IgG Mouse Monoclonal Antibody**Catalog #:** AMM80501

For research use only.

**Summary**

<b>Description</b>	Mouse monoclonal Antibody
<b>Host</b>	Mouse
<b>Application</b>	WB,ELISA
<b>Reactivity</b>	Human
<b>Conjugation</b>	Unconjugated
<b>Modification</b>	Unmodified
<b>Isotype</b>	Mouse IgG1
<b>Clonality</b>	Monoclonal
<b>Form</b>	Liquid
<b>Concentration</b>	1mg/ml
<b>Storage</b>	Aliquot and store at -20°C (valid for 12 months). Avoid freeze/thaw cycles.
<b>Shipping</b>	Ice bags
<b>Buffer</b>	Purified antibody in PBS with 0.05% sodium azide
<b>Purification</b>	Affinity Purification

**Application**

<b>Dilution Ratio</b>	WB 1:500-1:2000,ELISA 1:5000-1:20000
<b>Molecular Weight</b>	50kDa

**Antigen Information**

<b>Gene Name</b>	human IgG
<b>Alternative Names</b>	human IgG
<b>Gene ID</b>	
<b>SwissProt ID</b>	
<b>Immunogen</b>	Human IgG was isolated from human sera and purified by chromatography.

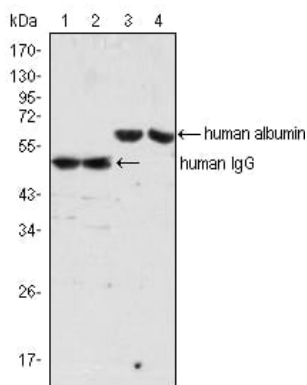
**Background**

Monoclonal anti-human IgG is derived from the hybridoma<sup>1</sup> produced by the fusion of mouse myeloma cells and splenocytes from an immunized mouse. It is specific for the whole human IgG molecule, has no cross action with human IgM molecule as determined by an ELISA. Reactivity is observed with all human IgG subclasses but not with the Fab fragment of human IgG, the

antibody site is located in the terminal end of human IgG (part of the Fab fragment), the Fc portion has various important functions such as complement fixation, site for rheumatoid factor.

## Research Area

### Image Data



Western blot analysis using IgG mouse mAb (lane 1, 2) and Albumin mouse mAb (lane 3, 4) against human serum (lane 1, 3) and plasma (lane 2, 4).