

**Product Name: LC3B(9H5)Mouse Monoclonal Antibody****Catalog #: AMM13242**

For research use only.

**Summary**

<b>Description</b>	Mouse monoclonal Antibody
<b>Host</b>	Mouse
<b>Application</b>	WB,IHC,ICC/IF
<b>Reactivity</b>	Human,Bovine
<b>Conjugation</b>	Unconjugated
<b>Modification</b>	Unmodified
<b>Isotype</b>	IgG
<b>Clonality</b>	Monoclonal
<b>Form</b>	Liquid
<b>Concentration</b>	1mg/ml
<b>Storage</b>	Aliquot and store at -20°C (valid for 12 months). Avoid freeze/thaw cycles.
<b>Shipping</b>	Ice bags
<b>Buffer</b>	Liquid in PBS containing 50% glycerol, 0.5% protective protein and 0.02% New type preservative N.
<b>Purification</b>	Affinity purification

**Application**

<b>Dilution Ratio</b>	WB 1:500-1:2000,IHC 1:50-1:300,ICC/IF 1:50-1:200
<b>Molecular Weight</b>	14,16kDa

**Antigen Information**

<b>Gene Name</b>	MAP1LC3B
<b>Alternative Names</b>	MAP1LC3B
<b>Gene ID</b>	81631.0
<b>SwissProt ID</b>	Q9GZQ8
<b>Immunogen</b>	Recombinant Protein of LC3B of MAP1LC3B

**Background**

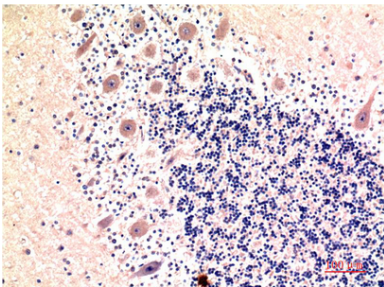
The product of this gene is a subunit of neuronal microtubule-associated MAP1A and MAP1B proteins, which are involved in microtubule assembly and important for neurogenesis. Studies on the rat homolog implicate a role for this gene in autophagy,

a process that involves the bulk degradation of cytoplasmic component. [provided by RefSeq, Jul 2008],caution:PubMed:12740394 has shown that the protein is cleaved at Lys-122 but PubMed:15355958 has shown that the cleavage site is at Gly-120 as in other mammalian orthologs.,function:Probably involved in formation of autophagosomal vacuoles (autophagosomes),PTM:The precursor molecule is cleaved by APG4B/ATG4B to form LC3-I. This is activated by APG7L/ATG7, transferred to ATG3 and conjugated to phospholipid to form LC3-II.,similarity:Belongs to the MAP1 LC3 family.,subcellular location:LC3-II binds to the autophagic membranes.,subunit:3 different light chains, LC1, LC2 and LC3, can associate with MAP1A and MAP1B proteins.,tissue specificity:Most abundant in heart, brain, skeletal muscle and testis. Little expression observed in liver.,

## Research Area

Signal Transduction

## Image Data



Immunohistochemical analysis of paraffin-embedded Human Brain Tissue using LC3B Mouse mAb diluted at 1:200.