

Product Name: α -tubulin(Acetyl Lys40)(4A8)Mouse Monoclonal Antibody**Catalog #:** AMM06270

For research use only.

Summary

Description	Mouse monoclonal Antibody
Host	Mouse
Application	WB,IHC,ICC/IF
Reactivity	Human,Rat,Mouse,Other
Conjugation	Unconjugated
Modification	Acetylated
Isotype	IgG
Clonality	Monoclonal
Form	Liquid
Concentration	1mg/ml
Storage	Aliquot and store at -20°C (valid for 12 months). Avoid freeze/thaw cycles.
Shipping	Ice bags
Buffer	Liquid in PBS containing 50% glycerol, 0.5% protective protein and 0.02% New type preservative N.
Purification	Affinity purification

Application

Dilution Ratio	WB 1:1000-1:2000,IHC 1:50-1:100,ICC/IF 1:100-1:200
Molecular Weight	52kDa

Antigen Information

Gene Name	TUBA1B
Alternative Names	Tubulin alpha-1B chain (Alpha-tubulin ubiquitous) (Tubulin K-alpha-1) (Tubulin alpha-ubiquitous chain)
Gene ID	7277.0
SwissProt ID	P68363
Immunogen	Synthetic Peptide of α -tubulin (Acetyl Lys40)

Background

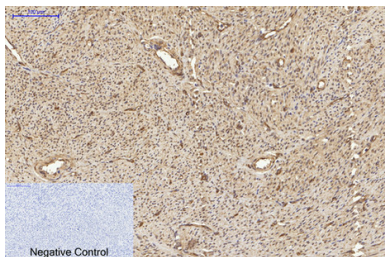
function:Tubulin is the major constituent of microtubules. It binds two moles of GTP, one at an exchangeable site on the beta

chain and one at a non-exchangeable site on the alpha-chain.,PTM:Undergoes a tyrosination/detyrosination cycle, the cyclic removal and re-addition of a C-terminal tyrosine residue by the enzymes tubulin tyrosine carboxypeptidase (TTCP) and tubulin tyrosine ligase (TTL), respectively.,similarity:Belongs to the tubulin family.,subunit:Dimer of alpha and beta chains.,function:Tubulin is the major constituent of microtubules. It binds two moles of GTP, one at an exchangeable site on the beta chain and one at a non-exchangeable site on the alpha-chain.,PTM:Undergoes a tyrosination/detyrosination cycle, the cyclic removal and re-addition of a C-terminal tyrosine residue by the enzymes tubulin tyrosine carboxypeptidase (TTCP) and tubulin tyrosine ligase (TTL), respectively.,similarity:Belongs to the tubulin family.,subunit:Dimer of alpha and beta chains.,

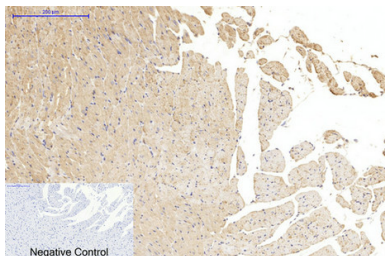
Research Area

Gap junction;Pathogenic Escherichia coli infection;

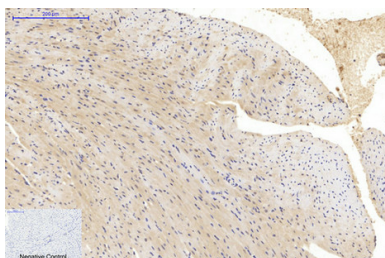
Image Data



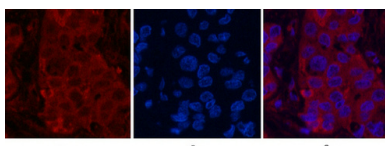
Immunohistochemical analysis of paraffin-embedded Human-uterus tissue. 1, α -tubulin (Acetyl Lys40) Monoclonal Antibody (4A8) was diluted at 1:200 (4°C,overnight) . 2, Sodium citrate pH 6.0 was used for antibody retrieval (>98°C,20min) . 3,Secondary antibody was diluted at 1:200 (room temperature, 30min) . Negative control was used by secondary antibody only.



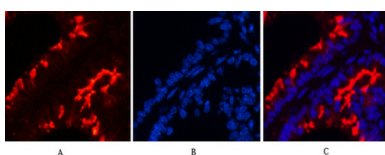
Immunohistochemical analysis of paraffin-embedded Rat-heart tissue. 1, α -tubulin (Acetyl Lys40) Monoclonal Antibody (4A8) was diluted at 1:200 (4°C,overnight) . 2, Sodium citrate pH 6.0 was used for antibody retrieval (>98°C,20min) . 3,Secondary antibody was diluted at 1:200 (room temperature, 30min) . Negative control was used by secondary antibody only.



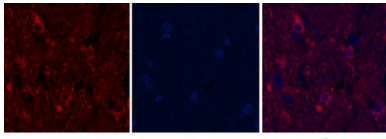
Immunohistochemical analysis of paraffin-embedded Mouse-heart tissue. 1, α -tubulin (Acetyl Lys40) Monoclonal Antibody (4A8) was diluted at 1:200 (4°C,overnight) . 2, Sodium citrate pH 6.0 was used for antibody retrieval (>98°C,20min) . 3,Secondary antibody was diluted at 1:200 (room temperature, 30min) . Negative control was used by secondary antibody only.



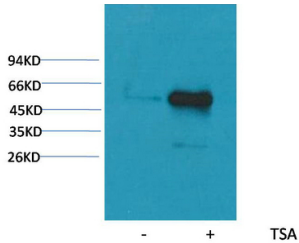
Immunofluorescence analysis of Human-liver-cancer tissue. 1, α -tubulin (Acetyl Lys40) Monoclonal Antibody (4A8) (red) was diluted at 1:200 (4°C,overnight) . 2, Cy3 labeled Secondary antibody was diluted at 1:300 (room temperature, 50min) .3, Picture B: DAPI (blue) 10min. Picture A:Target. Picture B: DAPI. Picture C: merge of A+B



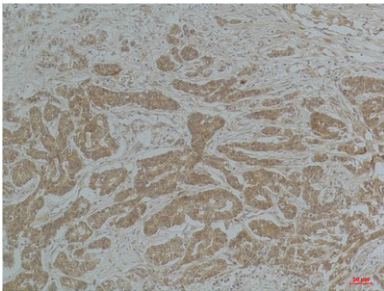
Immunofluorescence analysis of Mouse-lung tissue. 1, α -tubulin (Acetyl Lys40) Monoclonal Antibody (4A8) (red) was diluted at 1:200 (4°C,overnight) . 2, Cy3 labeled Secondary antibody was diluted at 1:300 (room temperature, 50min) .3, Picture B: DAPI (blue) 10min. Picture A:Target. Picture B: DAPI. Picture C: merge of A+B



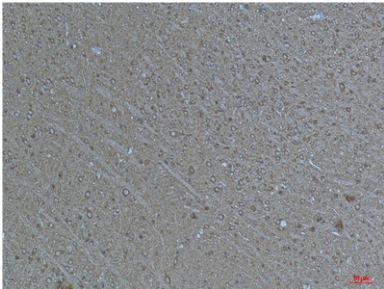
Immunofluorescence analysis of Rat-spinal-cord tissue. 1, α -tubulin (Acetyl Lys40) Monoclonal Antibody (4A8) (red) was diluted at 1:200 (4°C, overnight). 2, Cy3 labeled Secondary antibody was diluted at 1:300 (room temperature, 50min). 3, Picture B: DAPI (blue) 10min. Picture A: Target. Picture B: DAPI. Picture C: merge of A+B



Western blot analysis of extracts from Hela cells, untreated (-) or treated with TSA (1 μ M, 18 hr; +), using Acetyl- α -tubulin (Lys40) Mouse mAb 1:2000.



Immunohistochemical analysis of paraffin-embedded Human Breast Carcinoma using α -tubulin (Acetyl Lys40) Mouse mAb diluted at 1:200.



Immunohistochemical analysis of paraffin-embedded Mouse Brain Tissue using α -tubulin (Acetyl Lys40) Mouse mAb diluted at 1:200.