

**Product Name: Bcl2 (3H5) Mouse Monoclonal Antibody**  
**Catalog #: AMM03878**



## Summary

<b>Production Name</b>	Bcl2 (3H5) Mouse Monoclonal Antibody
<b>Description</b>	Mouse Monoclonal Antibody
<b>Host</b>	Mouse
<b>Application</b>	WB,IHC-F,IHC-P,ICC/IF
<b>Reactivity</b>	Chicken,Human

## Performance

<b>Conjugation</b>	Unconjugated
<b>Modification</b>	Unmodified
<b>Isotype</b>	IgG1
<b>Clonality</b>	Monoclonal
<b>Form</b>	Liquid
<b>Storage</b>	Store at 4°C short term. Aliquot and store at -20°C long term. Avoid freeze/thaw cycles.
<b>Buffer</b>	Liquid in PBS containing 50% glycerol, 0.5% protective protein and 0.02% sodium azide, pH 7.3.
<b>Purification</b>	Affinity Purification

## Immunogen

<b>Gene Name</b>	BCL2
<b>Alternative Names</b>	BCL2; Apoptosis regulator Bcl-2
<b>Gene ID</b>	596
<b>SwissProt ID</b>	P10415.

## Application

<b>Dilution Ratio</b>	WB: 1:500-1:1000 IHC: 1:50-1:100 IF: 1:50-1:200
<b>Molecular Weight</b>	Calculated MW: 26 kDa; Observed MW: 26 kDa

## Background

**Product Name: Bcl2 (3H5) Mouse Monoclonal Antibody**  
**Catalog #: AMM03878**



This gene encodes an integral outer mitochondrial membrane protein that blocks the apoptotic death of some cells such as lymphocytes. Constitutive expression of BCL2, such as in the case of translocation of BCL2 to Ig heavy chain locus, is thought to be the cause of follicular lymphoma.

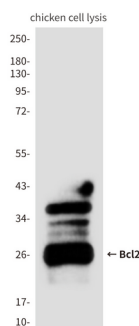
## Research Area

Cell Biology

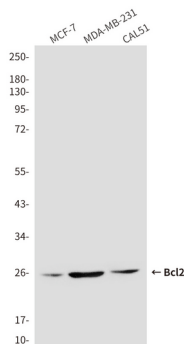
## Image Data



Immunohistochemistry analysis of paraffin-embedded Human tonsil tissue using Bcl2 (3H5) antibody. High-pressure and temperature Sodium Citrate pH 6.0 was used for antigen retrieval.



Western blot analysis of Bcl2 (3H5) in chicken lysates using Bcl2 (3H5) antibody

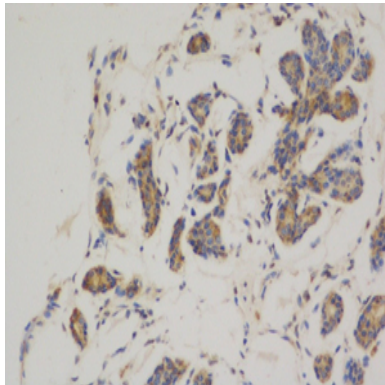


**Product Name: Bcl2 (3H5) Mouse Monoclonal Antibody**  
**Catalog #: AMM03878**



---

Western blot analysis of Bcl2 in Human breast cancer cell line MCF-7(A), MDAMB231(B) and Cal51(C) using Bcl2 antibody.



Immunohistochemistry analysis of paraffin-embedded Human breast cancer using Bcl2 antibody. High-pressure and temperature Sodium Citrate pH 6.0 was used for antigen retrieval.

### **Note**

For research use only.