

Product Name: EGFR (6H11) Mouse Monoclonal Antibody**Catalog #: AMM03872**

For research use only.

Summary

Description	Mouse monoclonal Antibody
Host	Mouse
Application	WB,ICC/IF,IP
Reactivity	Human,Monkey
Conjugation	Unconjugated
Modification	Unmodified
Isotype	IgG1
Clonality	Monoclonal
Form	Liquid
Concentration	1mg/ml
Storage	Aliquot and store at -20°C (valid for 12 months). Avoid freeze/thaw cycles.
Shipping	Ice bags
Buffer	Liquid in PBS containing 50% glycerol, 0.5% protective protein and 0.02% sodium azide, pH 7.3.
Purification	Affinity Purification

Application

Dilution Ratio	WB 1:500-1:1000,ICC/IF 1:50-1:200,IP 1:20-1:50
Molecular Weight	Calculated MW: 134 kDa; Observed MW: 175 kDa

Antigen Information

Gene Name	EGFR
Alternative Names	EGFR; ERBB; ERBB1; HER1; Epidermal growth factor receptor; Proto-oncogene c-ErbB-1; Receptor tyrosine-protein kinase erbB-1
Gene ID	1956
SwissProt ID	P00533
Immunogen	A synthetic peptide corresponding to target protein

Background

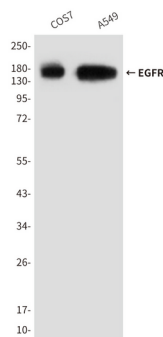
EGFR is a receptor tyrosine kinase. Receptor for epidermal growth factor (EGF) and related growth factors including TGF- α ,

amphiregulin, betacellulin, heparin-binding EGF-like growth factor, GP30 and vaccinia virus growth factor. Is involved in the control of cell growth and differentiation. . A single-pass transmembrane tyrosine kinase. Ligand binding to this receptor results in receptor dimerization, autophosphorylation (in trans), activation of various downstream signaling molecules and lysosomal degradation.

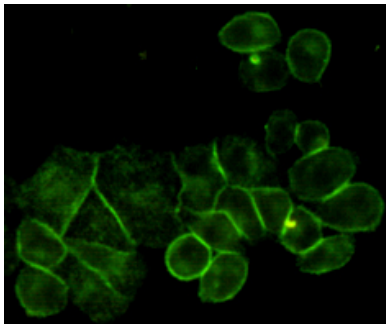
Research Area

Signal Transduction

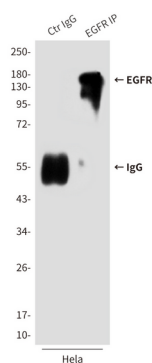
Image Data



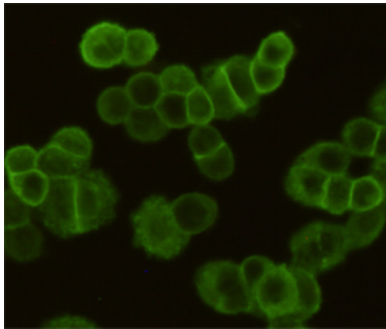
Western blot analysis of EGFR in A549 and COS7 lysates using EGFR antibody.



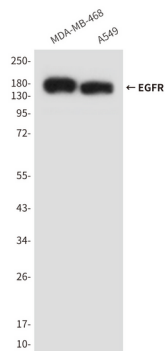
Immunocytochemistry analysis of EGFR (6H11) in HeLa using EGFR antibody.



Immunoprecipitation analysis of EGFR (6H11) in HeLa lysates using EGFR antibody.



Immunocytochemistry analysis of EGFR in MDA-MB-468 cells using EGFR antibody.



Western blot analysis of EGFR in A549 and MDA-MB-468 lysates using EGFR antibody.