
Product Name: Galectin 3 (4B2) Mouse Monoclonal Antibody**Catalog #: AMM03864**

For research use only.

Summary

Description	Mouse monoclonal Antibody
Host	Mouse
Application	WB,IHC,ICC/IF
Reactivity	Human,Mouse
Conjugation	Unconjugated
Modification	Unmodified
Isotype	IgG1
Clonality	Monoclonal
Form	Liquid
Concentration	1mg/ml
Storage	Aliquot and store at -20°C (valid for 12 months). Avoid freeze/thaw cycles.
Shipping	Ice bags
Buffer	Liquid in PBS containing 50% glycerol, 0.5% protective protein and 0.02% sodium azide, pH 7.3.
Purification	Affinity Purification

Application

Dilution Ratio	WB 1:500-1:1000,IHC 1:50-1:100,ICC/IF 1:50-1:200
Molecular Weight	Calculated MW: 26 kDa; Observed MW: 26 kDa

Antigen Information

Gene Name	LGALS3
Alternative Names	LGALS3
Gene ID	3958
SwissProt ID	P17931
Immunogen	A synthetic peptide of human Galectin 3

Background

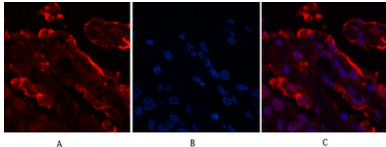
Galactose-specific lectin which binds IgE. May mediate with the alpha-3, beta-1 integrin the stimulation by CSPG4 of endothelial cells migration. Together with DMBT1, required for terminal differentiation of columnar epithelial cells during early

embryogenesis.

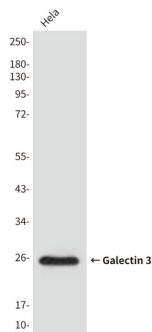
Research Area

Neuroscience

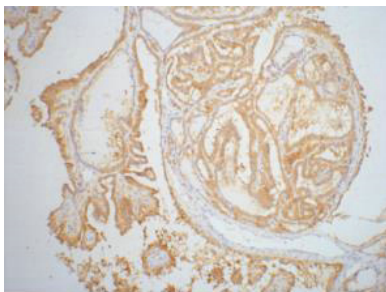
Image Data



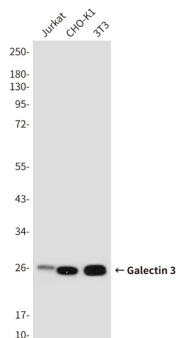
Immunofluorescence analysis of Galectin 3 (4B2) in Human lungcancer tissue using Galectin 3 (4B2) antibody (red), and DAPI (blue).



Western blot analysis of Galectin 3 (4B2) in HeLa lysates using Galectin 3 (4B2) antibody



Immunohistochemistry analysis of paraffin-embedded Human thyroid tissue using Galectin 3 (4B2) antibody. High-pressure and temperature Sodium Citrate pH 6.0 was used for antigen retrieval.



Western blot analysis of Galectin 3 (4B2) in Jurkat, CHO-K1, 3T3 lysates using Galectin 3 (4B2) antibody.