
Product Name: E2F1 (4G8) Mouse Monoclonal Antibody**Catalog #: AMM03861**

For research use only.

Summary

Description	Mouse monoclonal Antibody
Host	Mouse
Application	WB,ICC/IF,IP
Reactivity	Human,Mouse,Rat
Conjugation	Unconjugated
Modification	Unmodified
Isotype	IgG2b
Clonality	Monoclonal
Form	Liquid
Concentration	1mg/ml
Storage	Aliquot and store at -20°C (valid for 12 months). Avoid freeze/thaw cycles.
Shipping	Ice bags
Buffer	Liquid in PBS containing 50% glycerol, 0.5% protective protein and 0.02% sodium azide, pH 7.3.
Purification	Affinity Purification

Application

Dilution Ratio	WB 1:500-1:1000,ICC/IF 1:50-1:200,IP 1:20-1:50
Molecular Weight	Calculated MW: 47 kDa; Observed MW: 70 kDa

Antigen Information

Gene Name	E2F1
Alternative Names	E2F1; RBBP3; Transcription factor E2F1; E2F-1; PBR3; Retinoblastoma-associated protein 1; RBAP-1; Retinoblastoma-binding protein 3; RBBP-3; pRB-binding protein E2F-1
Gene ID	1869
SwissProt ID	Q01094
Immunogen	A synthetic peptide of human E2F1

Background

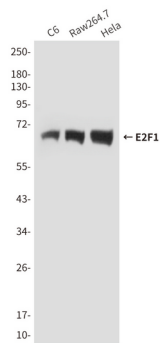
The protein encoded by this gene is a member of the E2F family of transcription factors. The E2F family plays a crucial role in the

control of cell cycle and action of tumor suppressor proteins and is also a target of the transforming proteins of small DNA tumor viruses.

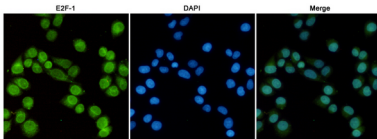
Research Area

Epigenetics and Nuclear Signaling

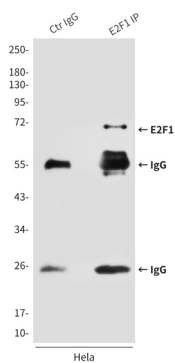
Image Data



Western blot analysis of E2F1 in C6, Raw264.7 and HeLa lysates using E2F1 antibody.



Immunofluorescence analysis of E2F1 (4G8) in HeLa using E2F1 antibody, and DAPI (blue).



Immunoprecipitation analysis of E2F1 (4G8) in HeLa lysates using E2F1 antibody.