

**Product Name: Proteasome beta 8 (3G3) Mouse  
Monoclonal Antibody  
Catalog #: AMM03707**

---

## Summary

<b>Production Name</b>	Proteasome beta 8 (3G3) Mouse Monoclonal Antibody
<b>Description</b>	Mouse Monoclonal Antibody
<b>Host</b>	Mouse
<b>Application</b>	WB,IHC-F,IHC-P,ICC/IF
<b>Reactivity</b>	Human,Rat

## Performance

<b>Conjugation</b>	Unconjugated
<b>Modification</b>	Unmodified
<b>Isotype</b>	IgG1
<b>Clonality</b>	Monoclonal
<b>Form</b>	Liquid
<b>Storage</b>	Store at 4°C short term. Aliquot and store at -20°C long term. Avoid freeze/thaw cycles.
<b>Buffer</b>	Liquid in PBS containing 50% glycerol, 0.5% protective protein and 0.02% sodium azide, pH 7.3.
<b>Purification</b>	Ascitic Fluid

## Immunogen

<b>Gene Name</b>	PSMB8
<b>Alternative Names</b>	PSMB8; LMP7; PSMB5i; RING10; Y2; Proteasome subunit beta type-8; Low molecular mass protein 7; Macropain subunit C13; Multicatalytic endopeptidase complex subunit C13; Proteasome component C13; Proteasome subunit beta-5i; Really interesting
<b>Gene ID</b>	5696
<b>SwissProt ID</b>	P28062.

## Application

<b>Dilution Ratio</b>	WB: 1:500-1:1000 IHC: 1:50-1:100 IF: 1:50-1:200
<b>Molecular Weight</b>	Calculated MW: 30 kDa; Observed MW: 30 kDa

---

**Product Name: Proteasome beta 8 (3G3) Mouse  
Monoclonal Antibody  
Catalog #: AMM03707**

---

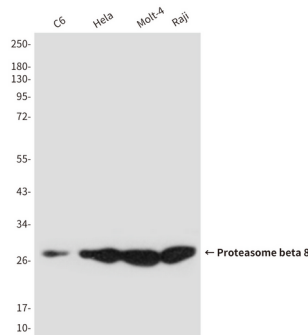
## Background

The proteasome is a multicatalytic proteinase complex which is characterized by its ability to cleave peptides with Arg, Phe, Tyr, Leu, and Glu adjacent to the leaving group at neutral or slightly basic pH. The proteasome has an ATP-dependent proteolytic activity.

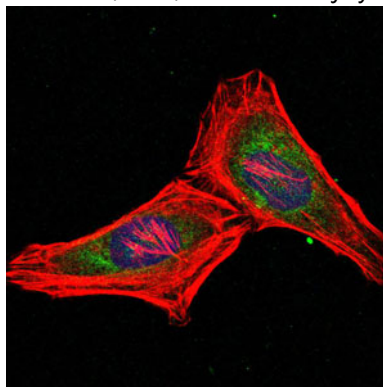
## Research Area

Cell Biology

## Image Data



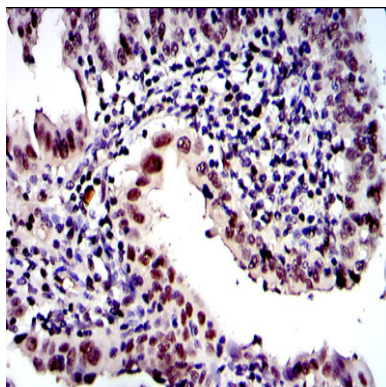
Western blot analysis of PSMB8/LMP7 in C6, HeLa, Molt4 and Raji lysates using PSMB8/LMP7 antibody.



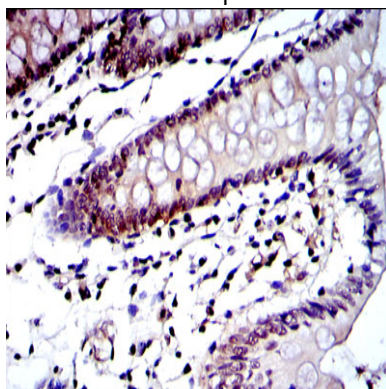
Immunofluorescence analysis of Proteasome beta 8 (3G3) in HeLa cells using PSMB8 antibody (green), and DAPI (blue)

**Product Name: Proteasome beta 8 (3G3) Mouse  
Monoclonal Antibody  
Catalog #: AMM03707**

---



Immunohistochemistry analysis of paraffin-embedded intima cancer tissues using PSMB8 antibody with DAB staining. High-pressure and temperature Sodium Citrate pH 6.0 was used for antigen retrieval.



Immunohistochemistry analysis of paraffin-embedded colon tissues using Proteasome beta 8 (3G3) antibody. High-pressure and temperature Sodium Citrate pH 6.0 was used for antigen retrieval.

### **Note**

For research use only.