
Product Name: Placental Alkaline Phosphatase Mouse Monoclonal Antibody**Catalog #: AMM03706**

For research use only.

Summary

Description	Mouse monoclonal Antibody
Host	Mouse
Application	WB,IHC
Reactivity	Human
Conjugation	Unconjugated
Modification	Unmodified
Isotype	IgG2b
Clonality	Monoclonal
Form	Liquid
Concentration	1mg/ml
Storage	Aliquot and store at -20°C (valid for 12 months). Avoid freeze/thaw cycles.
Shipping	Ice bags
Buffer	PBS containing 0.03% sodium azide.
Purification	Ascitic Fluid

Application

Dilution Ratio	WB 1:500-1:1000,IHC 1:50-1:100
Molecular Weight	Calculated MW: 58 kDa; Observed MW: 70 kDa

Antigen Information

Gene Name	ALPP
Alternative Names	ALPP; PLAP; Alkaline phosphatase; placental type; Alkaline phosphatase Regan isozyme; Placental alkaline phosphatase 1; PLAP-1
Gene ID	250
SwissProt ID	P05187
Immunogen	A synthetic peptide of human Placental alkaline phosphatase (phospho LAP)

Background

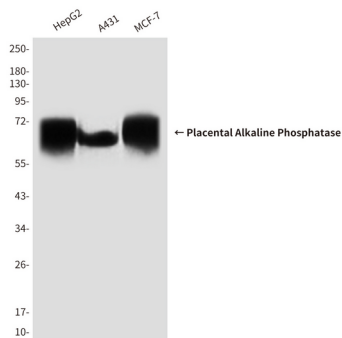
PLAP may assist in guiding migratory cells and transporting specific molecules, such as fatty acids and immunoglobulins, across the plasma membrane. The three tissue-specific APs identified in human, PLAP, germ cell AP (GCAP) and intestinal AP, are 90-

98% homologous and their genes are clustered on chromosome 2q.

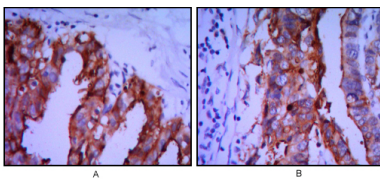
Research Area

Tags & Cell Markers

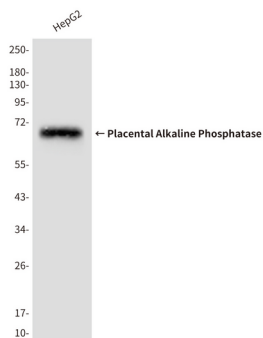
Image Data



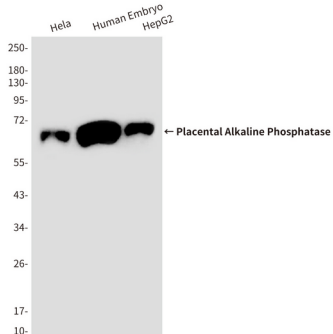
Western blot analysis of Placental Alkaline Phosphatase in HepG2 , A431 and MCF-7 lysates using Placental Alkaline Phosphatase antibody.



Immunohistochemical analysis of paraffin-embedded Human tonsils using Placental Alkaline Phosphatase antibody, with DAB staining. High-pressure and temperature Sodium Citrate pH 6.0 was used for antigen retrieval.



Western blot analysis of Placental Alkaline Phosphatase in HepG2 lysates using Placental Alkaline Phosphatase antibody



Western blot analysis of Placental Alkaline Phosphatase in HeLa, Human Embryo, HepG2 lysates using Placental Alkaline Phosphatase antibody.