

Product Name: Calumenin (4C6) Mouse Monoclonal Antibody**Catalog #: AMM03700**

For research use only.

Summary

Description	Mouse monoclonal Antibody
Host	Mouse
Application	WB
Reactivity	Human, Mouse
Conjugation	Unconjugated
Modification	Unmodified
Isotype	IgG1
Clonality	Monoclonal
Form	Liquid
Concentration	1mg/ml
Storage	Aliquot and store at -20°C (valid for 12 months). Avoid freeze/thaw cycles.
Shipping	Ice bags
Buffer	Liquid in PBS containing 50% glycerol, 0.5% protective protein and 0.02% sodium azide, pH 7.3.
Purification	Affinity Purification

Application

Dilution Ratio	WB 1:500-1:1000
Molecular Weight	Calculated MW: 37 kDa; Observed MW: 45 kDa

Antigen Information

Gene Name	CALU
Alternative Names	CALU; CALU_HUMAN; Calumenin 1; Calumenin 2; Calumenin; Crocalbin; crocalbin-like protein; FLJ90608; IEF SSP 9302; multiple EF-hand protein; OTTHUMP00000212712; OTTHUMP00000212713; OTTHUMP00000212714; OTTHUMP00000212715.
Gene ID	813
SwissProt ID	O43852
Immunogen	A synthetic peptide of human Calumenin

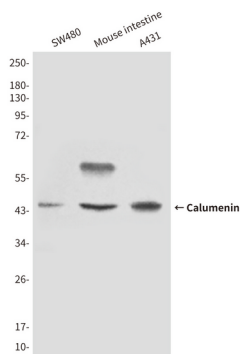
Background

The product of this gene is a calcium-binding protein localized in the endoplasmic reticulum (ER) and it is involved in such ER functions as protein folding and sorting. This protein belongs to a family of multiple EF-hand proteins (CERC) that include reticulocalbin, ERC-55, and Cab45 and the product of this gene. Alternatively spliced transcript variants encoding different isoforms have been identified. [provided by RefSeq, Oct 2008]

Research Area

Tags & Cell Markers

Image Data



Western blot analysis of Calumenin in SW480, mouse intestine and A431 lysates using Calumenin antibody.