

**Product Name: NSE (1H8) Mouse Monoclonal Antibody****Catalog #: AMM03684**

For research use only.

**Summary**

<b>Description</b>	Mouse monoclonal Antibody
<b>Host</b>	Mouse
<b>Application</b>	WB,ELISA
<b>Reactivity</b>	Human,Mouse,Rat
<b>Conjugation</b>	Unconjugated
<b>Modification</b>	Unmodified
<b>Isotype</b>	IgG1
<b>Clonality</b>	Monoclonal
<b>Form</b>	Liquid
<b>Concentration</b>	1mg/ml
<b>Storage</b>	Aliquot and store at -20°C (valid for 12 months). Avoid freeze/thaw cycles.
<b>Shipping</b>	Ice bags
<b>Buffer</b>	Liquid in PBS containing 50% glycerol, 0.5% protective protein and 0.02% sodium azide, pH 7.3.
<b>Purification</b>	Affinity Purification

**Application**

<b>Dilution Ratio</b>	WB 1:500-1:1000,ELISA 1:5000-1:20000
<b>Molecular Weight</b>	Calculated MW: 47 kDa; Observed MW: 47 kDa

**Antigen Information**

<b>Gene Name</b>	ENO2
<b>Alternative Names</b>	ENO2; Gamma-enolase; 2-phospho-D-glycerate hydro-lyase; Enolase 2; Neural enolase; Neuron-specific enolase; NSE
<b>Gene ID</b>	2026
<b>SwissProt ID</b>	P09104
<b>Immunogen</b>	Recombinant protein of human NSE

**Background**

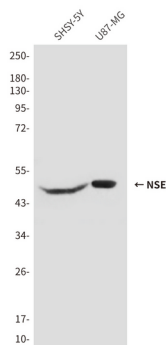
ENO2 an enzyme with 2-phospho-D-glycerate hydro-lyase activity. One of the three enolase isoenzymes found in mammals.

This isoenzyme, a homodimer, is found in mature neurons and cells of neuronal origin. A switch from alpha enolase to gamma enolase occurs in neural tissue during development in rats and primates.

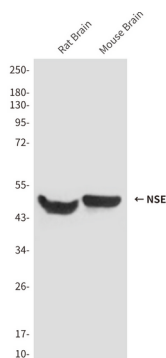
## Research Area

Signal Transduction

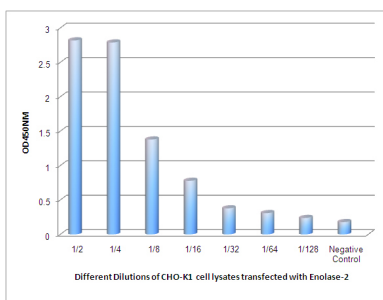
## Image Data



Western blot analysis of Enolase2 in SH-SY5Y and U87-MG lysates using Enolase2 antibody.



Western blot analysis of NSE (1H8) in rat Brain and mouse Brain lysates using Enolase2 antibody.



Observed Enolase2 levels in CHO-K1 cell lysates transfected with Enolase2 at different dilution.