

Product Name: NSE (1G7) Mouse Monoclonal Antibody
Catalog #: AMM03683



Summary

Production Name	NSE (1G7) Mouse Monoclonal Antibody
Description	Mouse Monoclonal Antibody
Host	Mouse
Application	WB,ELISA
Reactivity	Human,Mouse,Rat

Performance

Conjugation	Unconjugated
Modification	Unmodified
Isotype	IgG1
Clonality	Monoclonal
Form	Liquid
Storage	Store at 4°C short term. Aliquot and store at -20°C long term. Avoid freeze/thaw cycles.
Buffer	Liquid in PBS containing 50% glycerol, 0.5% protective protein and 0.02% sodium azide, pH 7.3.
Purification	Affinity Purification

Immunogen

Gene Name	ENO2
Alternative Names	ENO2; Gamma-enolase; 2-phospho-D-glycerate hydro-lyase; Enolase 2; Neural enolase; Neuron-specific enolase; NSE
Gene ID	2026
SwissProt ID	P09104.

Application

Dilution Ratio	WB: 1:500-1:1000 ELISA: 1:10000
Molecular Weight	Calculated MW: 47 kDa; Observed MW: 47 kDa

Product Name: NSE (1G7) Mouse Monoclonal Antibody
Catalog #: AMM03683



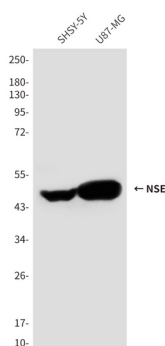
Background

ENO2 an enzyme with 2-phospho-D-glycerate hydro-lyase activity. One of the three enolase isoenzymes found in mammals. This isoenzyme, a homodimer, is found in mature neurons and cells of neuronal origin. A switch from alpha enolase to gamma enolase occurs in neural tissue during development in rats and primates.

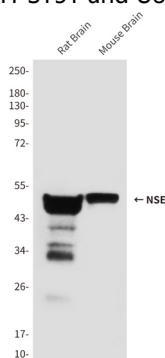
Research Area

Signal Transduction

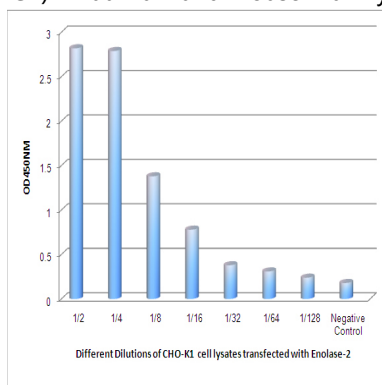
Image Data



Western blot analysis of Enolase2 in SH-SY5Y and U87-MG lysates using Enolase2 antibody.



Western blot analysis of NSE (1G7) in rat Brain and mouse Brain lysates using Enolase2 antibody.



Product Name: NSE (1G7) Mouse Monoclonal Antibody
Catalog #: AMM03683



Observed Enolase2 levels in CHO-K1 cell lysates transfected with Enolase2 at different dilution.

Note

For research use only.