
Product Name: HtrA2 (8G11) Mouse Monoclonal Antibody**Catalog #: AMM03672**

For research use only.

Summary

Description	Mouse monoclonal Antibody
Host	Mouse
Application	WB,IP
Reactivity	Human
Conjugation	Unconjugated
Modification	Unmodified
Isotype	IgG1
Clonality	Monoclonal
Form	Liquid
Concentration	1mg/ml
Storage	Aliquot and store at -20°C (valid for 12 months). Avoid freeze/thaw cycles.
Shipping	Ice bags
Buffer	Liquid in PBS containing 50% glycerol, 0.5% protective protein and 0.02% sodium azide, pH 7.3.
Purification	Affinity Purification

Application

Dilution Ratio	WB 1:500-1:1000,IP 1:20-1:50
Molecular Weight	Calculated MW: 49 kDa; Observed MW: 37 kDa

Antigen Information

Gene Name	HTRA2 High temperature requirement protein A2; HTRA 2; HtrA like serine protease; HtrA serine peptidase 2; HtrA; E. coli; homolog of; 2; HtrA2; HTRA2_HUMAN; mitochondrial; Omi stress regulated endoprotease; Omi stress-regulated endoprotease; PARK 13; PARK13; Protease serine 25; PRSS 25; PRSS25; Serine protease 25; Serine protease HTRA2; Serine protease HTRA2 mitochondrial; Serine protease htra2 mitochondrial precursor; Serine protease omi; Serine proteinase OMI.
Alternative Names	
Gene ID	27429
SwissProt ID	O43464

Immunogen

A synthetic peptide of human HtrA2/Omi

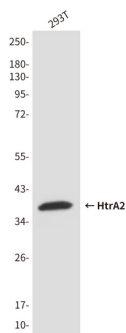
Background

High temperature requirement protein A2 (HtrA2)/Omi is a serine protease with homology to the E. coli HtrA protein (DegP) and is thought to be involved in apoptosis and stress-induced degradation of misfolded proteins. While HtrA2 was originally identified to be present in either the nucleus or endoplasmic reticulum, subsequent studies have shown that it localizes in mitochondria and is released during apoptosis.

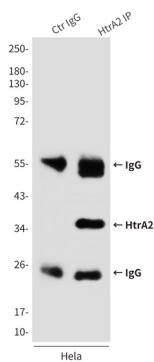
Research Area

Neuroscience

Image Data



Western blot analysis of HtrA2/Omi in 293T lysates using HtrA2/Omi antibody.



Immunoprecipitation analysis of HtrA2 (8G11) in HeLa lysates using HtrA2/Omi antibody.