

Product Name: HP1 gamma (5G10) Mouse Monoclonal Antibody**Catalog #: AMM03640**

For research use only.

Summary

Description	Mouse monoclonal Antibody
Host	Mouse
Application	WB,IHC,ICC/IF,IP
Reactivity	Mouse,Human,Monkey,Hamster,Rat
Conjugation	Unconjugated
Modification	Unmodified
Isotype	IgG1
Clonality	Monoclonal
Form	Liquid
Concentration	1mg/ml
Storage	Aliquot and store at -20°C (valid for 12 months). Avoid freeze/thaw cycles.
Shipping	Ice bags
Buffer	Liquid in PBS containing 50% glycerol, 0.5% protective protein and 0.02% sodium azide, pH 7.3.
Purification	Affinity Purification

Application

Dilution Ratio	WB 1:500-1:1000,IHC 1:50-1:100,ICC/IF 1:50-1:200,IP 1:20-1:50
Molecular Weight	Calculated MW: 21 kDa; Observed MW: 21 kDa

Antigen Information

Gene Name	CBX3
Alternative Names	CBX3; Chromobox protein homolog 3; HECH; Heterochromatin protein 1 homolog gamma; HP1 gamma; Modifier 2 protein
Gene ID	11335
SwissProt ID	Q13185
Immunogen	A synthetic peptide of human HP1 gamma

Background

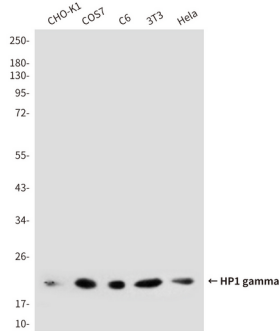
Recognizes and binds histone H3 tails methylated at 'Lys-9', leading to epigenetic repression. May contribute to the association

of the heterochromatin with the inner nuclear membrane through its interaction with lamin B receptor (LBR). Involved in the formation of functional kinetochore through interaction with MIS12 complex proteins.

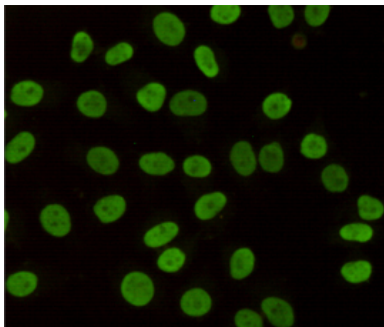
Research Area

Epigenetics and Nuclear Signaling

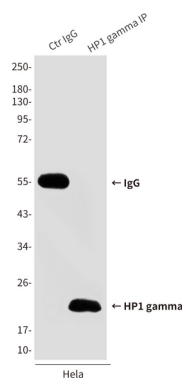
Image Data



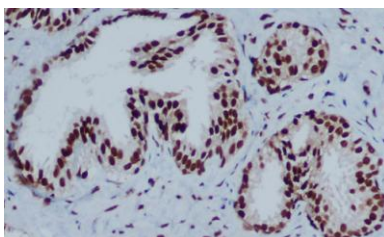
Western blot analysis of HP1gamma in HeLa, 3T3, C6, COS7 and CHO-K1 lysates using HP1 gamma antibody.



Immunocytochemistry analysis of HP1 gamma (5G10) in HeLa using HP1 gamma antibody.



Immunoprecipitation analysis of HP1 gamma (5G10) in HeLa lysates using HP1gamma antibody.



Immunohistochemistry analysis of paraffin-embedded Prostate Cancer using HP1 gamma antibody. High-pressure and temperature Sodium Citrate pH 6.0 was used for antigen retrieval.

Immunocytochemistry analysis of HP1 gamma in HeLa using HP1gamma (2001375G10) antibody(green) and Histone H3.1 (Phospho-Ser10) (310045)antibody(red).DAPI (blue).

