

Product Name: alpha Skeletal Muscle Actin (2B10) Mouse Monoclonal Antibody**Catalog #:** AMM03589

For research use only.

Summary

Description	Mouse monoclonal Antibody
Host	Mouse
Application	WB,IHC,ICC/IF,IP
Reactivity	Human,Mouse,Rat
Conjugation	Unconjugated
Modification	Unmodified
Isotype	IgG
Clonality	Monoclonal
Form	Liquid
Concentration	1mg/ml
Storage	Aliquot and store at -20°C (valid for 12 months). Avoid freeze/thaw cycles.
Shipping	Ice bags
Buffer	Liquid in PBS containing 50% glycerol, 0.5% protective protein and 0.02% sodium azide, pH 7.3.
Purification	Affinity Purification

Application

Dilution Ratio	WB 1:500-1:1000,IHC 1:50-1:100,ICC/IF 1:50-1:200,IP 1:20-1:50
Molecular Weight	Calculated MW: 42 kDa; Observed MW: 42 kDa

Antigen Information

Gene Name	ACTA1
Alternative Names	ACTA1; ACTA; Actin; alpha skeletal muscle; Alpha-actin-1
Gene ID	58
SwissProt ID	P68133
Immunogen	A synthetic peptide of human Actin

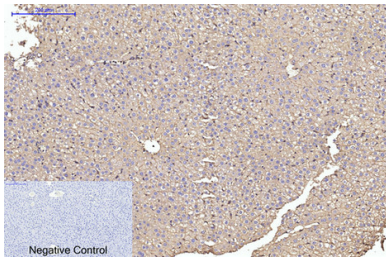
Background

Actins are highly conserved proteins that are involved in various types of cell motility and are ubiquitously expressed in all eukaryotic cells.

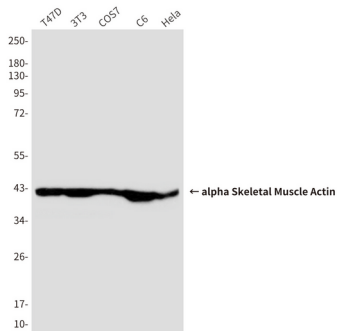
Research Area

Signal Transduction

Image Data



Immunohistochemistry analysis of paraffin-embedded rat liver tissue using alpha Skeletal Muscle Actin (2B10) antibody. High-pressure and temperature Sodium Citrate pH 6.0 was used for antigen retrieval. Negative control was used by secondary antibody only.



Western blot analysis of alpha Skeletal Muscle Actin (2B10) in T47D, 3T3, COS7, C6 and Hela lysates using alpha Skeletal Muscle Actin (2B10) antibody