

**Product Name: MLH1 (4C1) Mouse Monoclonal Antibody****Catalog #: AMM03564**

For research use only.

**Summary**

<b>Description</b>	Mouse monoclonal Antibody
<b>Host</b>	Mouse
<b>Application</b>	WB,ICC/IF
<b>Reactivity</b>	Human,Monkey
<b>Conjugation</b>	Unconjugated
<b>Modification</b>	Unmodified
<b>Isotype</b>	IgG1
<b>Clonality</b>	Monoclonal
<b>Form</b>	Liquid
<b>Concentration</b>	1mg/ml
<b>Storage</b>	Aliquot and store at -20°C (valid for 12 months). Avoid freeze/thaw cycles.
<b>Shipping</b>	Ice bags
<b>Buffer</b>	PBS containing 0.03% sodium azide.
<b>Purification</b>	Ascitic Fluid

**Application**

<b>Dilution Ratio</b>	WB 1:500-1:1000,ICC/IF 1:50-1:200
<b>Molecular Weight</b>	Calculated MW: 85 kDa; Observed MW: 85 kDa

**Antigen Information**

<b>Gene Name</b>	MLH1
<b>Alternative Names</b>	MLH1; COCA2; DNA mismatch repair protein Mlh1; MutL protein homolog 1
<b>Gene ID</b>	4292
<b>SwissProt ID</b>	P40692
<b>Immunogen</b>	A synthetic peptide of human MLH1

**Background**

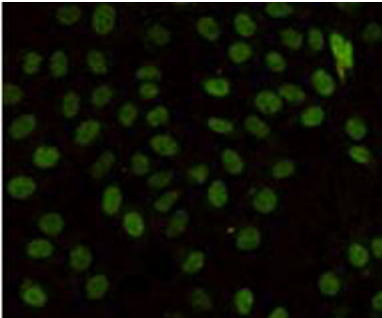
This gene was identified as a locus frequently mutated in hereditary nonpolyposis colon cancer (HNPCC). It is a human homolog of the E. coli DNA mismatch repair gene mutL, consistent with the characteristic alterations in microsatellite sequences (RER+ phenotype) found in HNPCC. Alternatively spliced transcript variants encoding different isoforms have been

described, but their full-length natures have not been determined.

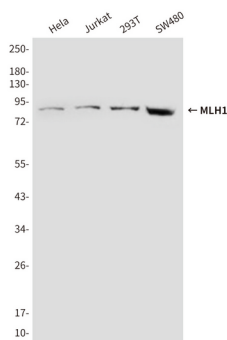
## Research Area

Epigenetics and Nuclear Signaling

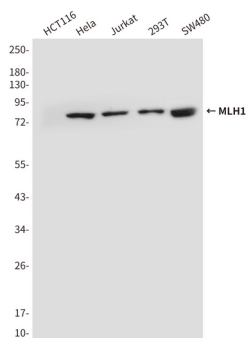
## Image Data



Immunocytochemistry analysis of MLH1 (4C1) in HeLa cells using MLH1 antibody.



Western blot analysis of MLH1 (4C1) in HeLa, Jurkat, 293T and SW480 lysates using MLH1 (4C1) antibody



Western blot analysis of MLH1 (4C1) in SW48, 293T, Jurkat and HeLa lysates using MLH1 (4C1) antibody