
Product Name: SHP1 (2B7) Mouse Monoclonal Antibody**Catalog #: AMM03544**

For research use only.

Summary

Description	Mouse monoclonal Antibody
Host	Mouse
Application	WB,IP
Reactivity	Human
Conjugation	Unconjugated
Modification	Unmodified
Isotype	IgG2a
Clonality	Monoclonal
Form	Liquid
Concentration	1mg/ml
Storage	Aliquot and store at -20°C (valid for 12 months). Avoid freeze/thaw cycles.
Shipping	Ice bags
Buffer	Liquid in PBS containing 50% glycerol, 0.5% protective protein and 0.02% sodium azide, pH 7.3.
Purification	Affinity Purification

Application

Dilution Ratio	WB 1:500-1:1000,IP 1:20-1:50
Molecular Weight	Calculated MW: 68 kDa; Observed MW: 68 kDa

Antigen Information

Gene Name	PTPN6 PTPN6; HCP; PTP1C; Tyrosine-protein phosphatase non-receptor type 6; Hematopoietic cell
Alternative Names	protein-tyrosine phosphatase; Protein-tyrosine phosphatase 1C; PTP-1C; Protein-tyrosine phosphatase SHP-1; SH-PTP1
Gene ID	5777
SwissProt ID	P29350
Immunogen	A synthetic peptide of human SHP1

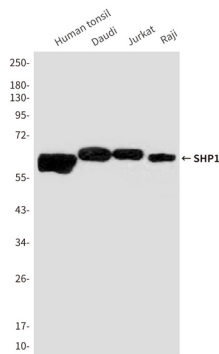
Background

The protein encoded by this gene is a member of the protein tyrosine phosphatase (PTP) family. PTPs are known to be signaling molecules that regulate a variety of cellular processes including cell growth, differentiation, mitotic cycle, and oncogenic transformation.

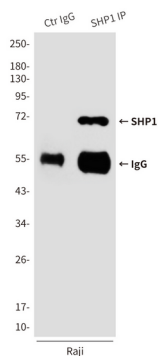
Research Area

Cell Biology

Image Data



Western blot analysis of SHP1 in Human tonsil, Daudi, Jurkat and Raji lysates using SHP1 antibody.



Immunoprecipitation analysis of SHP1 (2B7) in Raji lysates using SHP1 antibody.